



[Go to Product page](#)

Datasheet for ABIN6750548
anti-C10orf88 antibody (AA 330-379)

1 Image

Overview

Quantity:	100 µL
Target:	C10orf88
Binding Specificity:	AA 330-379
Reactivity:	Human
Host:	Rabbit
Clonality:	Polyclonal
Conjugate:	This C10orf88 antibody is un-conjugated
Application:	Western Blotting (WB)

Product Details

Immunogen:	Synthetic peptide located between aa330-379 of human C10orf88 (Q9H8K7, NP_079218). Percent identity by BLAST analysis: Human (100%). Type of Immunogen: Synthetic peptide
Specificity:	Human C10orf88
Purification:	Immunoaffinity purified

Target Details

Target:	C10orf88
Alternative Name:	C10orf88 (C10orf88 Products)
Background:	Name/Gene ID: C10orf88

Target Details

Synonyms: C10orf88, Em:AC073585.5

Gene ID: 80007

NCBI Accession: [NP_079218](#)

UniProt: [Q9H8K7](#)

Application Details

Application Notes: Optimal working dilution should be determined by the investigator.

Comment: Target Species of Antibody: Human

Restrictions: For Research Use only

Handling

Format: Lyophilized

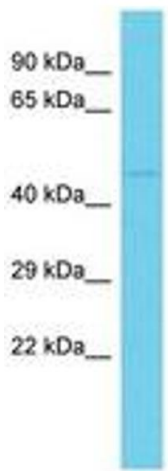
Reconstitution: Distilled water

Concentration: Lot specific

Buffer: Lyophilized from PBS

Storage: 4 °C, -20 °C

Storage Comment: Long term: -20°C, the use of 50% glycerol is recommended if storing aliquots in -20°C for long term use (up to 1 year)
Short term (less than 1 week): 4°C. Avoid freeze-thaw cycles.



Host: Rabbit
Target Name: C10orf88
Sample Tissue: HCT15 Cell Lysate
Antibody Dilution: 1.0µg/ml

Image 1.