



[Go to Product page](#)

Datasheet for ABIN6750549

anti-C10ORF90 antibody (AA 491-540)

1 Image

Overview

Quantity:	100 µL
Target:	C10ORF90
Binding Specificity:	AA 491-540
Reactivity:	Human
Host:	Rabbit
Clonality:	Polyclonal
Conjugate:	This C10ORF90 antibody is un-conjugated
Application:	Western Blotting (WB)

Product Details

Immunogen:	Synthetic peptide located between aa491-540 of human C10orf90 (Q96M02, NP_001004298). Percent identity by BLAST analysis: Human (100%). Type of Immunogen: Synthetic peptide
Specificity:	Human C10orf90
Purification:	Immunoaffinity purified

Target Details

Target:	C10ORF90
Alternative Name:	C10orf90 (C10ORF90 Products)
Background:	Name/Gene ID: C10orf90

Target Details

Synonyms: C10orf90, Centrosomal protein C10orf90, FATS, RP11-422P15.2, BA422P15.2

Gene ID: 118611

NCBI Accession: [NP_001004298](#)

UniProt: [Q96M02](#)

Application Details

Application Notes: Optimal working dilution should be determined by the investigator.

Comment: Target Species of Antibody: Human

Restrictions: For Research Use only

Handling

Format: Lyophilized

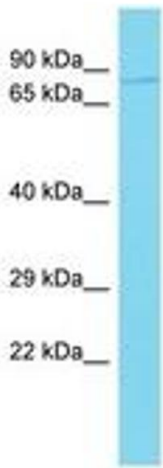
Reconstitution: Distilled water

Concentration: Lot specific

Buffer: Lyophilized from PBS

Storage: 4 °C, -20 °C

Storage Comment: Long term: -20°C, the use of 50% glycerol is recommended if storing aliquots in -20°C for long term use (up to 1 year)
Short term (less than 1 week): 4°C. Avoid freeze-thaw cycles.



Host: Rabbit
Target Name: C10orf90
Sample Tissue: 721_B Cell Lysate
Antibody Dilution: 1.0µg/ml

Image 1.