



[Go to Product page](#)

Datasheet for ABIN6750551
anti-C12orf56 antibody (AA 77-126)

1 Image

Overview

Quantity:	100 µL
Target:	C12orf56 (C12ORF56)
Binding Specificity:	AA 77-126
Reactivity:	Human
Host:	Rabbit
Clonality:	Polyclonal
Conjugate:	This C12orf56 antibody is un-conjugated
Application:	Western Blotting (WB)

Product Details

Immunogen:	Synthetic peptide located between aa77-126 of human C12orf56 (NP_001093146). Percent identity by BLAST analysis: Human (100%). Type of Immunogen: Synthetic peptide
Specificity:	Human C12orf56
Purification:	Immunoaffinity purified

Target Details

Target:	C12orf56 (C12ORF56)
Alternative Name:	C12orf56 (C12ORF56 Products)
Background:	Name/Gene ID: C12orf56

Target Details

Synonyms: C12orf56

Gene ID: 115749

NCBI Accession: [NP_001093146](#)

UniProt: [Q8IXR9](#)

Application Details

Application Notes: Optimal working dilution should be determined by the investigator.

Comment: Target Species of Antibody: Human

Restrictions: For Research Use only

Handling

Format: Lyophilized

Reconstitution: Distilled water

Concentration: Lot specific

Buffer: Lyophilized from PBS

Storage: 4 °C, -20 °C

Storage Comment: Long term: -20°C, the use of 50% glycerol is recommended if storing aliquots in -20°C for long term use (up to 1 year)
Short term (less than 1 week): 4°C. Avoid freeze-thaw cycles.

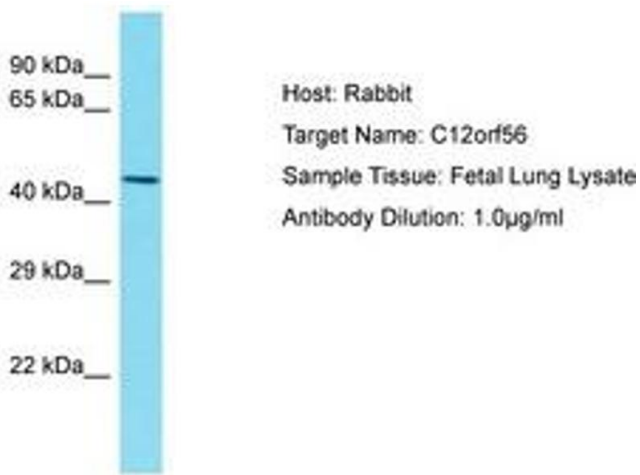


Image 1.