



[Go to Product page](#)

Datasheet for ABIN6750564
anti-GFRAL antibody (AA 86-135)

1 Image

Overview

Quantity:	100 µL
Target:	GFRAL
Binding Specificity:	AA 86-135
Reactivity:	Human
Host:	Rabbit
Clonality:	Polyclonal
Conjugate:	This GFRAL antibody is un-conjugated
Application:	Western Blotting (WB)

Product Details

Immunogen:	Synthetic peptide located between aa86-135 of human GFRAL (Q6UXV0, NP_997293). Percent identity by BLAST analysis: Human, Chimpanzee (100%). Type of Immunogen: Synthetic peptide
Specificity:	Human GFRAL
Purification:	Immunoaffinity purified

Target Details

Target:	GFRAL
Alternative Name:	GFRAL (GFRAL Products)
Background:	Name/Gene ID: GFRAL

Target Details

Synonyms: GFRAL, C6orf144, BA360D14.1, GRAL, IVFI9356, UNQ9356

Gene ID: 389400

NCBI Accession: [NP_997293](#)

UniProt: [Q6UXV0](#)

Application Details

Application Notes: Optimal working dilution should be determined by the investigator.

Comment: Target Species of Antibody: Human

Restrictions: For Research Use only

Handling

Format: Lyophilized

Reconstitution: Distilled water

Concentration: Lot specific

Buffer: Lyophilized from PBS

Storage: 4 °C, -20 °C

Storage Comment: Long term: -20°C, the use of 50% glycerol is recommended if storing aliquots in -20°C for long term use (up to 1 year)
Short term (less than 1 week): 4°C. Avoid freeze-thaw cycles.

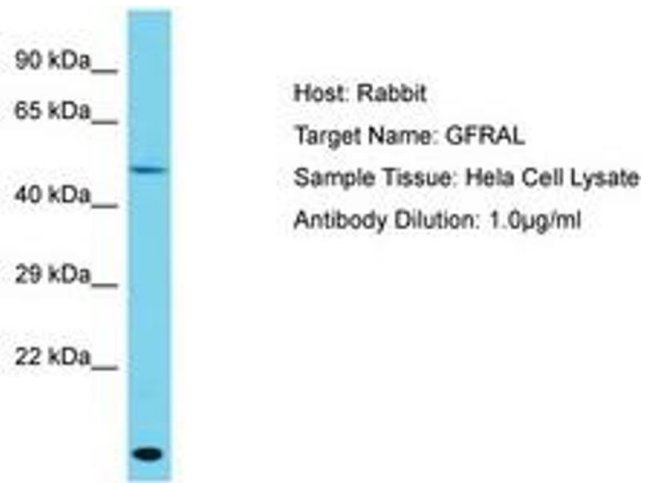


Image 1.