



Datasheet for ABIN6750570
anti-KIAA0556 antibody (AA 142-191)



[Go to Product page](#)

1 Image

Overview

Quantity:	100 µL
Target:	KIAA0556
Binding Specificity:	AA 142-191
Reactivity:	Human
Host:	Rabbit
Clonality:	Polyclonal
Conjugate:	This KIAA0556 antibody is un-conjugated
Application:	Western Blotting (WB)

Product Details

Immunogen:	Synthetic peptide located between aa142-191 of human KIAA0556 (O60303, NP_056017). Percent identity by BLAST analysis: Human (100%). Type of Immunogen: Synthetic peptide
Specificity:	Human KIAA0556
Purification:	Immunoaffinity purified

Target Details

Target:	KIAA0556
Alternative Name:	KIAA0556 (KIAA0556 Products)
Background:	Name/Gene ID: KIAA0556

Target Details

Synonyms: KIAA0556

Gene ID: 23247

NCBI Accession: [NP_056017](#)

UniProt: [O60303](#)

Application Details

Application Notes: Optimal working dilution should be determined by the investigator.

Comment: Target Species of Antibody: Human

Restrictions: For Research Use only

Handling

Format: Lyophilized

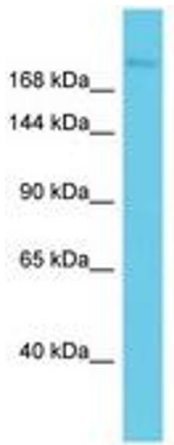
Reconstitution: Distilled water

Concentration: Lot specific

Buffer: Lyophilized from PBS

Storage: 4 °C, -20 °C

Storage Comment: Long term: -20°C, the use of 50% glycerol is recommended if storing aliquots in -20°C for long term use (up to 1 year)
Short term (less than 1 week): 4°C. Avoid freeze-thaw cycles.



Host: Rabbit
Target Name: KIAA0556
Sample Tissue: NCI-H226 Cell Lysate
Antibody Dilution: 1.0µg/ml

Image 1.