



Datasheet for ABIN6750573
anti-KIAA1919 antibody (AA 186-235)



[Go to Product page](#)

1 Image

Overview

Quantity:	100 µL
Target:	KIAA1919
Binding Specificity:	AA 186-235
Reactivity:	Human
Host:	Rabbit
Clonality:	Polyclonal
Conjugate:	This KIAA1919 antibody is un-conjugated
Application:	Western Blotting (WB)

Product Details

Immunogen:	Synthetic peptide located between aa186-235 of human KIAA1919 (Q5TF39, NP_699200). Percent identity by BLAST analysis: Human, Chimpanzee (100%). Type of Immunogen: Synthetic peptide
Specificity:	Human NAGLT1
Purification:	Immunoaffinity purified

Target Details

Target:	KIAA1919
Alternative Name:	KIAA1919 / NAGLT1 (KIAA1919 Products)
Background:	Name/Gene ID: KIAA1919

Target Details

Synonyms: KIAA1919, MFSD4B, NaGLT1

Gene ID: 91749

NCBI Accession: [NP_699200](#)

Application Details

Application Notes: Optimal working dilution should be determined by the investigator.

Comment: Target Species of Antibody: Human

Restrictions: For Research Use only

Handling

Format: Lyophilized

Reconstitution: Distilled water

Concentration: Lot specific

Buffer: Lyophilized from PBS

Handling Advice: Avoid repeat freeze-thaw cycles.

Storage: 4 °C, -20 °C

Storage Comment: Long term: -20°C, the use of 50% glycerol is recommended if storing aliquots in -20°C for long term use (up to 1 year)
Short term (less than 1 week): 4°C. Avoid freeze-thaw cycles.

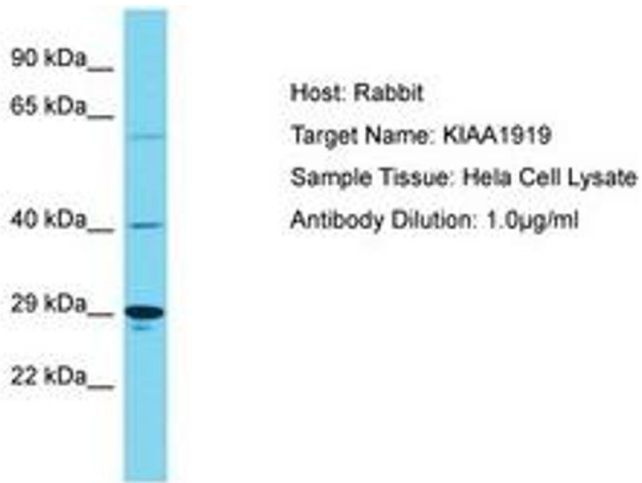


Image 1.