



Datasheet for ABIN6750575
anti-KRT38 antibody (AA 94-143)



[Go to Product page](#)

1 Image

Overview

Quantity:	100 µL
Target:	KRT38
Binding Specificity:	AA 94-143
Reactivity:	Human
Host:	Rabbit
Clonality:	Polyclonal
Conjugate:	This KRT38 antibody is un-conjugated
Application:	Western Blotting (WB)

Product Details

Immunogen:	Synthetic peptide located between aa94-143 of human KRT38 (O76015, NP_006762). Percent identity by BLAST analysis: Human, Chimpanzee (100%). Type of Immunogen: Synthetic peptide
Specificity:	Human KRT38
Purification:	Immunoaffinity purified

Target Details

Target:	KRT38
Alternative Name:	KRT38 / Cytokeratin 38 (KRT38 Products)
Background:	Name/Gene ID: KRT38

Target Details

Synonyms: KRT38, Hair keratin, type I Ha8, Keratin, hair, acidic, 8, Keratin 38, Keratin, type I cuticular Ha8, HHa8, K38, Keratin-38, HA8, HKA8, KRTHA8

Gene ID: 8687

NCBI Accession: [NP_006762](#)

Application Details

Application Notes: Optimal working dilution should be determined by the investigator.

Comment: Target Species of Antibody: Human

Restrictions: For Research Use only

Handling

Format: Lyophilized

Reconstitution: Distilled water

Concentration: Lot specific

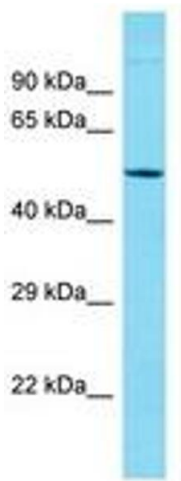
Buffer: Lyophilized from PBS

Handling Advice: Avoid repeat freeze-thaw cycles.

Storage: 4 °C, -20 °C

Storage Comment: Long term: -20°C, the use of 50% glycerol is recommended if storing aliquots in -20°C for long term use (up to 1 year)

Short term (less than 1 week): 4°C. Avoid freeze-thaw cycles.



Host: Rabbit
Target Name: KRT38
Sample Tissue: Jurkat Cell Lysate
Antibody Dilution: 1.0µg/ml

Image 1.