



[Go to Product page](#)

Datasheet for ABIN6750584
anti-SDCCAG3 antibody (AA 221-270)

1 Image

Overview

Quantity:	100 µL
Target:	SDCCAG3
Binding Specificity:	AA 221-270
Reactivity:	Human
Host:	Rabbit
Clonality:	Polyclonal
Conjugate:	This SDCCAG3 antibody is un-conjugated
Application:	Western Blotting (WB)

Product Details

Immunogen:	Synthetic peptide located between aa221-270 of human SDCCAG3 (NP_006634). Percent identity by BLAST analysis: Human, Chimpanzee (100%). Type of Immunogen: Synthetic peptide
Specificity:	Human SDCCAG3
Purification:	Immunoaffinity purified

Target Details

Target:	SDCCAG3
Alternative Name:	SDCCAG3 (SDCCAG3 Products)
Background:	Name/Gene ID: SDCCAG3

Target Details

Synonyms: SDCCAG3, Antigen NY-CO-3, NY-CO-3

Gene ID: 10807

NCBI Accession: [NP_006634](#)

UniProt: [Q96C92](#)

Application Details

Application Notes: Optimal working dilution should be determined by the investigator.

Comment: Target Species of Antibody: Human

Restrictions: For Research Use only

Handling

Format: Lyophilized

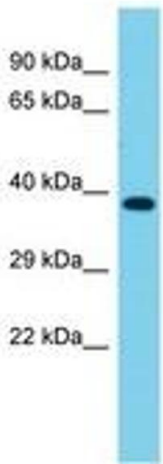
Reconstitution: Distilled water

Concentration: Lot specific

Buffer: Lyophilized from PBS

Storage: 4 °C, -20 °C

Storage Comment: Long term: -20°C, the use of 50% glycerol is recommended if storing aliquots in -20°C for long term use (up to 1 year)
Short term (less than 1 week): 4°C. Avoid freeze-thaw cycles.



Host: Rabbit
Target Name: SDCCAG3
Sample Tissue: Fetal Heart Lysate
Antibody Dilution: 1.0µg/ml

Image 1.