

Datasheet for ABIN6750587
anti-ZC3H13 antibody (AA 1455-1504)



[Go to Product page](#)

1 Image

Overview

Quantity:	100 µL
Target:	ZC3H13
Binding Specificity:	AA 1455-1504
Reactivity:	Human, Cow, Rabbit, Pig
Host:	Rabbit
Clonality:	Polyclonal
Conjugate:	This ZC3H13 antibody is un-conjugated
Application:	Western Blotting (WB)

Product Details

Immunogen:	Synthetic peptide located between aa1455-1504 of human ZC3H13 (Q5T200-2, NP_055885). Percent identity by BLAST analysis: Human, Chimpanzee, Bovine, Rabbit, Pig (100%). Type of Immunogen: Synthetic peptide
Specificity:	Human KIAA0853 / ZC3H13
Purification:	Immunoaffinity purified

Target Details

Target:	ZC3H13
Alternative Name:	ZC3H13 (ZC3H13 Products)
Background:	Name/Gene ID: ZC3H13

Target Details

Synonyms: ZC3H13, KIAA0853

Gene ID: 23091

NCBI Accession: [NP_055885](#)

UniProt: [Q5T200](#)

Application Details

Application Notes: Optimal working dilution should be determined by the investigator.

Comment: Target Species of Antibody: Human

Restrictions: For Research Use only

Handling

Format: Lyophilized

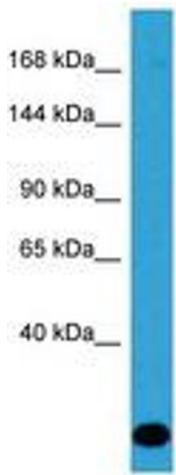
Reconstitution: Distilled water

Concentration: Lot specific

Buffer: Lyophilized from PBS

Storage: 4 °C, -20 °C

Storage Comment: Long term: -20°C, the use of 50% glycerol is recommended if storing aliquots in -20°C for long term use (up to 1 year)
Short term (less than 1 week): 4°C. Avoid freeze-thaw cycles.



Host: Rabbit
Target Name: ZC3H13
Sample Tissue: Jurkat Cell Lysate
Antibody Dilution: 1.0µg/ml

Image 1.