



[Go to Product page](#)

Datasheet for ABIN6750592
anti-POTEH antibody (AA 421-470)

1 Image

Overview

Quantity:	100 µL
Target:	POTEH
Binding Specificity:	AA 421-470
Reactivity:	Human
Host:	Rabbit
Clonality:	Polyclonal
Conjugate:	This POTEH antibody is un-conjugated
Application:	Western Blotting (WB)

Product Details

Immunogen:	Synthetic peptide located between aa421-470 of human POTEH (Q6S545, NP_001129685). Percent identity by BLAST analysis: Human (100%). Type of Immunogen: Synthetic peptide
Specificity:	Human POTEH
Purification:	Immunoaffinity purified

Target Details

Target:	POTEH
Alternative Name:	POTEH (POTEH Products)
Background:	Name/Gene ID: POTEH

Target Details

Synonyms: POTEH, Actin, beta-like 1, ACTBL1, ANKRD26-like family C member 3, CT104.7, A26C3, POTE-22, POTE22

Gene ID: 23784

NCBI Accession: [NP_001129685](#)

UniProt: [Q6S5H5](#)

Application Details

Application Notes: Optimal working dilution should be determined by the investigator.

Comment: Target Species of Antibody: Human

Restrictions: For Research Use only

Handling

Format: Lyophilized

Reconstitution: Distilled water

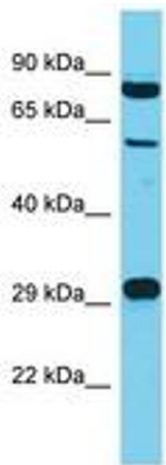
Concentration: Lot specific

Buffer: Lyophilized from PBS

Storage: 4 °C, -20 °C

Storage Comment: Long term: -20°C, the use of 50% glycerol is recommended if storing aliquots in -20°C for long term use (up to 1 year)

Short term (less than 1 week): 4°C. Avoid freeze-thaw cycles.



Host: Rabbit
Target Name: POTEH
Sample Tissue: HepG2 Cell Lysate
Antibody Dilution: 1.0µg/ml

Image 1.