



[Go to Product page](#)

Datasheet for ABIN6750594  
**anti-SUSD5 antibody (AA 304-353)**

1 Image

### Overview

Quantity:	100 µL
Target:	SUSD5
Binding Specificity:	AA 304-353
Reactivity:	Human
Host:	Rabbit
Clonality:	Polyclonal
Conjugate:	This SUSD5 antibody is un-conjugated
Application:	Western Blotting (WB)

### Product Details

Immunogen:	Synthetic peptide located between aa304-353 of human SUSD5 (O60279, NP_056366). Percent identity by BLAST analysis: Human, Chimpanzee (100%).  Type of Immunogen: Synthetic peptide
Specificity:	Human SUSD5
Purification:	Immunoaffinity purified

### Target Details

Target:	SUSD5
Alternative Name:	SUSD5 ( <a href="#">SUSD5 Products</a> )
Background:	Name/Gene ID: SUSD5

## Target Details

---

Synonyms: SUSD5, KIAA0527, Sushi domain containing 5

Gene ID: 26032

NCBI Accession: [NP\\_056366](#)

UniProt: [O60279](#)

## Application Details

---

Application Notes: Optimal working dilution should be determined by the investigator.

Comment: Target Species of Antibody: Human

Restrictions: For Research Use only

## Handling

---

Format: Lyophilized

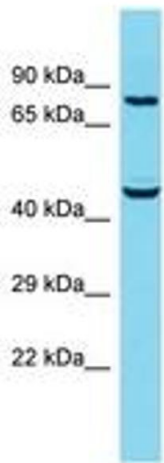
Reconstitution: Distilled water

Concentration: Lot specific

Buffer: Lyophilized from PBS

Storage: 4 °C, -20 °C

Storage Comment: Long term: -20°C, the use of 50% glycerol is recommended if storing aliquots in -20°C for long term use (up to 1 year)  
Short term (less than 1 week): 4°C. Avoid freeze-thaw cycles.



Host: Rabbit  
Target Name: SUSD5  
Sample Tissue: PANC1 Cell Lysate  
Antibody Dilution: 1.0µg/ml

Image 1.