



[Go to Product page](#)

Datasheet for ABIN6750601
anti-MACROD1 antibody (AA 83-132)

1 Image

Overview

Quantity:	100 µL
Target:	MACROD1
Binding Specificity:	AA 83-132
Reactivity:	Human
Host:	Rabbit
Clonality:	Polyclonal
Conjugate:	This MACROD1 antibody is un-conjugated
Application:	Western Blotting (WB)

Product Details

Immunogen:	Synthetic peptide located between aa83-132 of human MACROD1 (Q9BQ69, NP_054786). Percent identity by BLAST analysis: Human, Chimpanzee (100%). Type of Immunogen: Synthetic peptide
Specificity:	Human MACROD1 / LRP16
Purification:	Immunoaffinity purified

Target Details

Target:	MACROD1
Alternative Name:	MACROD1 / LRP16 (MACROD1 Products)
Background:	Name/Gene ID: MACROD1

Target Details

Synonyms: MACROD1, MACRO domain containing 1, Protein LRP16, LRP16

Gene ID: 28992

NCBI Accession: [NP_054786](#)

UniProt: [Q9BQ69](#)

Application Details

Application Notes: Optimal working dilution should be determined by the investigator.

Comment: Target Species of Antibody: Human

Restrictions: For Research Use only

Handling

Format: Lyophilized

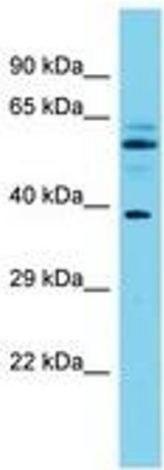
Reconstitution: Distilled water

Concentration: Lot specific

Buffer: Lyophilized from PBS

Storage: 4 °C, -20 °C

Storage Comment: Long term: -20°C, the use of 50% glycerol is recommended if storing aliquots in -20°C for long term use (up to 1 year)
Short term (less than 1 week): 4°C. Avoid freeze-thaw cycles.



Host: Rabbit
Target Name: MACROD1
Sample Tissue: Fetal Brain Lysate
Antibody Dilution: 1.0µg/ml

Image 1.