



[Go to Product page](#)

Datasheet for ABIN6750606
anti-SSUH2 antibody (AA 184-233)

1 Image

Overview

| | |
|----------------------|--------------------------------------|
| Quantity: | 100 µL |
| Target: | SSUH2 |
| Binding Specificity: | AA 184-233 |
| Reactivity: | Human |
| Host: | Rabbit |
| Clonality: | Polyclonal |
| Conjugate: | This SSUH2 antibody is un-conjugated |
| Application: | Western Blotting (WB) |

Product Details

| | |
|---------------|---|
| Immunogen: | Synthetic peptide located between aa184-233 of human SSUH2 (F5H2S5, NP_001243677). Percent identity by BLAST analysis: Human, Chimpanzee (100%). Type of Immunogen: Synthetic peptide |
| Specificity: | Human C3orf32 |
| Purification: | Immunoaffinity purified |

Target Details

| | |
|-------------------|--|
| Target: | SSUH2 |
| Alternative Name: | SSUH2 / C3orf32 (SSUH2 Products) |
| Background: | Name/Gene ID: SSUH2 |

Target Details

Synonyms: SSUH2, Fls485, Ssu-2 homolog (C. elegans), SSU-2, C3orf32

Gene ID: 51066

NCBI Accession: [NP_001243677](#)

UniProt: [Q9Y2M2](#)

Application Details

Application Notes: Optimal working dilution should be determined by the investigator.

Comment: Target Species of Antibody: Human

Restrictions: For Research Use only

Handling

Format: Lyophilized

Reconstitution: Distilled water

Concentration: Lot specific

Buffer: Lyophilized from PBS

Storage: 4 °C, -20 °C

Storage Comment: Long term: -20°C, the use of 50% glycerol is recommended if storing aliquots in -20°C for long term use (up to 1 year)
Short term (less than 1 week): 4°C. Avoid freeze-thaw cycles.

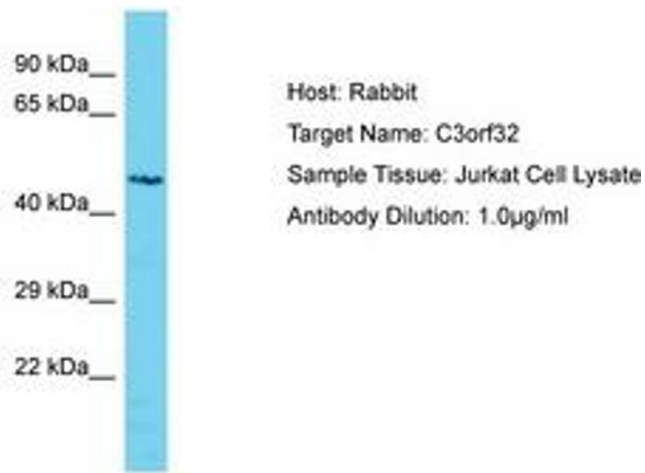


Image 1.