



Datasheet for ABIN6750616
anti-C17orf59 antibody (AA 38-87)



[Go to Product page](#)

1 Image

Overview

Quantity:	100 µL
Target:	C17orf59 (C17ORF59)
Binding Specificity:	AA 38-87
Reactivity:	Human
Host:	Rabbit
Clonality:	Polyclonal
Conjugate:	This C17orf59 antibody is un-conjugated
Application:	Western Blotting (WB)

Product Details

Immunogen:	Synthetic peptide located between aa38-87 of human C17orf59 (NP_060092). Percent identity by BLAST analysis: Human (100%). Type of Immunogen: Synthetic peptide
Specificity:	Human C17orf59
Purification:	Immunoaffinity purified

Target Details

Target:	C17orf59 (C17ORF59)
Alternative Name:	C17orf59 (C17ORF59 Products)
Background:	Name/Gene ID: C17orf59

Target Details

Synonyms: C17orf59, PRO2472

Gene ID: 54785

NCBI Accession: [NP_060092](#)

UniProt: [Q96GS4](#)

Application Details

Application Notes: Optimal working dilution should be determined by the investigator.

Comment: Target Species of Antibody: Human

Restrictions: For Research Use only

Handling

Format: Lyophilized

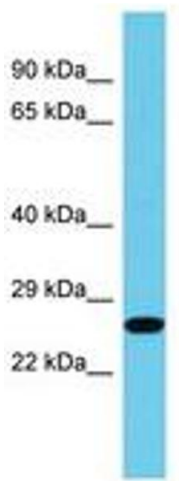
Reconstitution: Distilled water

Concentration: Lot specific

Buffer: Lyophilized from PBS

Storage: 4 °C, -20 °C

Storage Comment: Long term: -20°C, the use of 50% glycerol is recommended if storing aliquots in -20°C for long term use (up to 1 year)
Short term (less than 1 week): 4°C. Avoid freeze-thaw cycles.



Host: Rabbit
Target Name: C17orf59
Sample Tissue: MCF7 Cell Lysate
Antibody Dilution: 1.0µg/ml

Image 1.