



[Go to Product page](#)

Datasheet for ABIN6750640
anti-FAM222B antibody (AA 435-484)

1 Image

Overview

Quantity:	100 µL
Target:	FAM222B
Binding Specificity:	AA 435-484
Reactivity:	Human
Host:	Rabbit
Clonality:	Polyclonal
Conjugate:	This FAM222B antibody is un-conjugated
Application:	Western Blotting (WB)

Product Details

Immunogen:	Synthetic peptide located between aa435-484 of human FAM222B (Q8WU58, NP_060652). Percent identity by BLAST analysis: Human, Chimpanzee (100%). Type of Immunogen: Synthetic peptide
Specificity:	Human C17orf63
Purification:	Immunoaffinity purified

Target Details

Target:	FAM222B
Alternative Name:	FAM222B (FAM222B Products)
Background:	Name/Gene ID: FAM222B

Target Details

Synonyms: FAM222B, C17orf63, Protein FAM222B

Gene ID: 55731

NCBI Accession: [NP_060652](#)

UniProt: [Q8WU58](#)

Application Details

Application Notes: Optimal working dilution should be determined by the investigator.

Comment: Target Species of Antibody: Human

Restrictions: For Research Use only

Handling

Format: Lyophilized

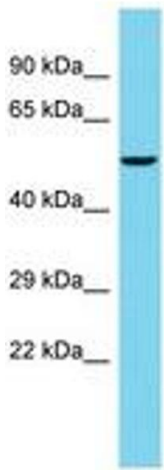
Reconstitution: Distilled water

Concentration: Lot specific

Buffer: Lyophilized from PBS

Storage: 4 °C, -20 °C

Storage Comment: Long term: -20°C, the use of 50% glycerol is recommended if storing aliquots in -20°C for long term use (up to 1 year)
Short term (less than 1 week): 4°C. Avoid freeze-thaw cycles.



Host: Rabbit
Target Name: FAM222B
Sample Tissue: PANC1 Cell Lysate
Antibody Dilution: 1.0µg/ml

Image 1.