



[Go to Product page](#)

Datasheet for ABIN6750642
anti-CBWD1 antibody (AA 108-157)

1 Image

Overview

Quantity:	100 µL
Target:	CBWD1
Binding Specificity:	AA 108-157
Reactivity:	Human
Host:	Rabbit
Clonality:	Polyclonal
Conjugate:	This CBWD1 antibody is un-conjugated
Application:	Western Blotting (WB)

Product Details

Immunogen:	Synthetic peptide located between aa108-157 of human CBWD1 (Q9BRT8, NP_001138827). Percent identity by BLAST analysis: Human, Chimpanzee (100%). Type of Immunogen: Synthetic peptide
Specificity:	Human CBWD1
Purification:	Immunoaffinity purified

Target Details

Target:	CBWD1
Alternative Name:	CBWD1 (CBWD1 Products)
Background:	Name/Gene ID: CBWD1

Target Details

Synonyms: CBWD1, COBW domain containing 1, NPC-A-6, COBP, COBW-like protein

Gene ID: 55871

NCBI Accession: [NP_001138827](#)

UniProt: [Q9BRT8](#)

Application Details

Application Notes: Optimal working dilution should be determined by the investigator.

Comment: Target Species of Antibody: Human

Restrictions: For Research Use only

Handling

Format: Lyophilized

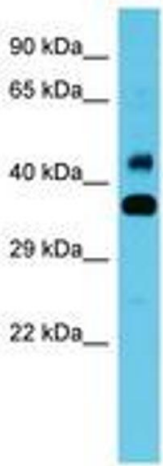
Reconstitution: Distilled water

Concentration: Lot specific

Buffer: Lyophilized from PBS

Storage: 4 °C, -20 °C

Storage Comment: Long term: -20°C, the use of 50% glycerol is recommended if storing aliquots in -20°C for long term use (up to 1 year)
Short term (less than 1 week): 4°C. Avoid freeze-thaw cycles.



Host: Rabbit
Target Name: CBWD1
Sample Tissue: Fetal Heart Lysate
Antibody Dilution: 1.0µg/ml

Image 1.