



[Go to Product page](#)

Datasheet for ABIN6750644
anti-UBFD1 antibody (AA 153-202)

1 Image

Overview

Quantity:	100 µL
Target:	UBFD1
Binding Specificity:	AA 153-202
Reactivity:	Human, Mouse, Cow, Rabbit, Pig
Host:	Rabbit
Clonality:	Polyclonal
Conjugate:	This UBFD1 antibody is un-conjugated
Application:	Western Blotting (WB)

Product Details

Immunogen:	Synthetic peptide located between aa153-202 of human UBFD1 (O14562, NP_061989). Percent identity by BLAST analysis: Human, Chimpanzee, Mouse, Bovine, Rabbit, Pig (100%). Type of Immunogen: Synthetic peptide
Specificity:	Human UBFD1
Purification:	Immunoaffinity purified

Target Details

Target:	UBFD1
Alternative Name:	UBFD1 (UBFD1 Products)
Background:	Name/Gene ID: UBFD1

Target Details

Synonyms: UBFD1, UBPH

Gene ID: 56061

NCBI Accession: [NP_061989](#)

UniProt: [O14562](#)

Application Details

Application Notes: Optimal working dilution should be determined by the investigator.

Comment: Target Species of Antibody: Human

Restrictions: For Research Use only

Handling

Format: Lyophilized

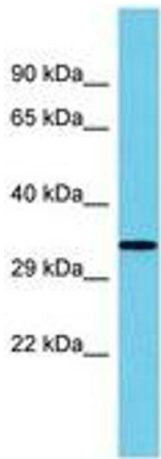
Reconstitution: Distilled water

Concentration: Lot specific

Buffer: Lyophilized from PBS

Storage: 4 °C, -20 °C

Storage Comment: Long term: -20°C, the use of 50% glycerol is recommended if storing aliquots in -20°C for long term use (up to 1 year)
Short term (less than 1 week): 4°C. Avoid freeze-thaw cycles.



Host: Rabbit
Target Name: UBFD1
Sample Tissue: Fetal Kidney Lysate
Antibody Dilution: 1.0µg/ml

Image 1.