



[Go to Product page](#)

Datasheet for ABIN6750645  
**anti-UBFD1 antibody (AA 218-267)**

1 Image

Overview

Quantity:	100 µL
Target:	UBFD1
Binding Specificity:	AA 218-267
Reactivity:	Human, Mouse, Rat, Cow, Rabbit, Guinea Pig, Horse, Pig
Host:	Rabbit
Clonality:	Polyclonal
Conjugate:	This UBFD1 antibody is un-conjugated
Application:	Western Blotting (WB)

Product Details

Immunogen: Synthetic peptide located between aa218-267 of human UBFD1 (O14562, NP\_061989). Percent identity by BLAST analysis: Human, Chimpanzee, Mouse, Rat, Bovine, Rabbit, Horse, Pig, Guinea pig (100%).

Type of Immunogen: Synthetic peptide

Specificity: Human UBFD1

Purification: Immunoaffinity purified

Target Details

Target: UBFD1

Alternative Name: UBFD1 ([UBFD1 Products](#))

## Target Details

---

Background:	Name/Gene ID: UBFD1
	Synonyms: UBFD1, UBPH
Gene ID:	56061
NCBI Accession:	<a href="#">NP_061989</a>
UniProt:	<a href="#">O14562</a>

## Application Details

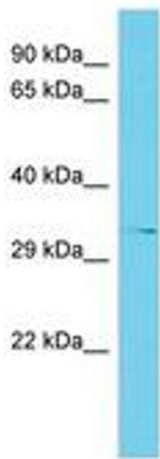
---

Application Notes:	Optimal working dilution should be determined by the investigator.
Comment:	Target Species of Antibody: Human
Restrictions:	For Research Use only

## Handling

---

Format:	Lyophilized
Reconstitution:	Distilled water
Concentration:	Lot specific
Buffer:	Lyophilized from PBS
Storage:	4 °C,-20 °C
Storage Comment:	Long term: -20°C, the use of 50% glycerol is recommended if storing aliquots in -20°C for long term use (up to 1 year) Short term (less than 1 week): 4°C. Avoid freeze-thaw cycles.



Host: Rabbit  
Target Name: UBFD1  
Sample Tissue: Fetal Kidney Lysate  
Antibody Dilution: 1.0µg/ml

Image 1.