



[Go to Product page](#)

Datasheet for ABIN6750648
anti-C8ORF44 antibody (AA 33-82)

1 Image

Overview

Quantity:	100 µL
Target:	C8ORF44
Binding Specificity:	AA 33-82
Reactivity:	Human
Host:	Rabbit
Clonality:	Polyclonal
Conjugate:	This C8ORF44 antibody is un-conjugated
Application:	Western Blotting (WB)

Product Details

Immunogen:	Synthetic peptide located between aa33-82 of human C8orf44 (Q96CB5, NP_062553). Percent identity by BLAST analysis: Human (100%). Type of Immunogen: Synthetic peptide
Specificity:	Human C8orf44
Purification:	Immunoaffinity purified

Target Details

Target:	C8ORF44
Alternative Name:	C8orf44 (C8ORF44 Products)
Background:	Name/Gene ID: C8orf44

Target Details

Synonyms: C8orf44

Gene ID: 56260

NCBI Accession: [NP_062553](#)

UniProt: [Q96CB5](#)

Application Details

Application Notes: Optimal working dilution should be determined by the investigator.

Comment: Target Species of Antibody: Human

Restrictions: For Research Use only

Handling

Format: Lyophilized

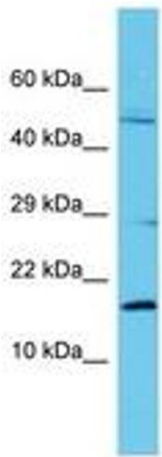
Reconstitution: Distilled water

Concentration: Lot specific

Buffer: Lyophilized from PBS

Storage: 4 °C, -20 °C

Storage Comment: Long term: -20°C, the use of 50% glycerol is recommended if storing aliquots in -20°C for long term use (up to 1 year)
Short term (less than 1 week): 4°C. Avoid freeze-thaw cycles.



Host: Rabbit
Target Name: C8orf44
Sample Tissue: Fetal Kidney Lysate
Antibody Dilution: 1.0µg/ml

Image 1.