



[Go to Product page](#)

Datasheet for ABIN6750651

anti-ANKRD36B antibody (AA 1263-1312)

1 Image

Overview

Quantity:	100 µL
Target:	ANKRD36B
Binding Specificity:	AA 1263-1312
Reactivity:	Human
Host:	Rabbit
Clonality:	Polyclonal
Conjugate:	This ANKRD36B antibody is un-conjugated
Application:	Western Blotting (WB)

Product Details

Immunogen:	Synthetic peptide located between aa1263-1312 of human ANKRD36B (Q8N2N9, NP_079466). Percent identity by BLAST analysis: Human (100%). Type of Immunogen: Synthetic peptide
Specificity:	Human KIAA1641
Purification:	Immunoaffinity purified

Target Details

Target:	ANKRD36B
Alternative Name:	KIAA1641 (ANKRD36B Products)
Background:	Name/Gene ID: ANKRD36B

Target Details

Synonyms: ANKRD36B, KIAA1641, Melanoma-associated antigen, Ankyrin repeat domain 36B, CLL-associated antigen KW-1

Gene ID: 57730

NCBI Accession: [NP_079466](#)

UniProt: [Q8N2N9](#)

Application Details

Application Notes: Optimal working dilution should be determined by the investigator.

Comment: Target Species of Antibody: Human

Restrictions: For Research Use only

Handling

Format: Lyophilized

Reconstitution: Distilled water

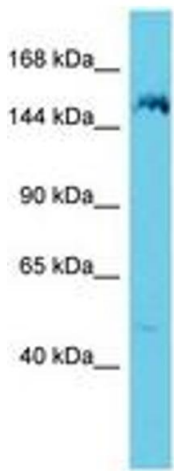
Concentration: Lot specific

Buffer: Lyophilized from PBS

Storage: 4 °C, -20 °C

Storage Comment: Long term: -20°C, the use of 50% glycerol is recommended if storing aliquots in -20°C for long term use (up to 1 year)

Short term (less than 1 week): 4°C. Avoid freeze-thaw cycles.



Host: Rabbit
Target Name: ANKRD36B
Sample Tissue: 721_B Cell Lysate
Antibody Dilution: 1.0µg/ml

Image 1.