

Datasheet for ABIN6750664  
**anti-SPATA5L1 antibody (AA 580-629)**



[Go to Product page](#)

1 Image

## Overview

Quantity:	100 µL
Target:	SPATA5L1
Binding Specificity:	AA 580-629
Reactivity:	Human
Host:	Rabbit
Clonality:	Polyclonal
Conjugate:	This SPATA5L1 antibody is un-conjugated
Application:	Western Blotting (WB)

## Product Details

Immunogen:	Synthetic peptide located between aa580-629 of human SPATA5L1 (Q9BVQ7, NP_076968). Percent identity by BLAST analysis: Human (100%).  Type of Immunogen: Synthetic peptide
Specificity:	Human SPATA5L1
Purification:	Immunoaffinity purified

## Target Details

Target:	SPATA5L1
Alternative Name:	SPATA5L1 ( <a href="#">SPATA5L1 Products</a> )
Background:	Name/Gene ID: SPATA5L1

## Target Details

---

Synonyms: SPATA5L1

Gene ID: 79029

NCBI Accession: [NP\\_076968](#)

## Application Details

---

Application Notes: Optimal working dilution should be determined by the investigator.

Comment: Target Species of Antibody: Human

Restrictions: For Research Use only

## Handling

---

Format: Lyophilized

Reconstitution: Distilled water

Concentration: Lot specific

Buffer: Lyophilized from PBS

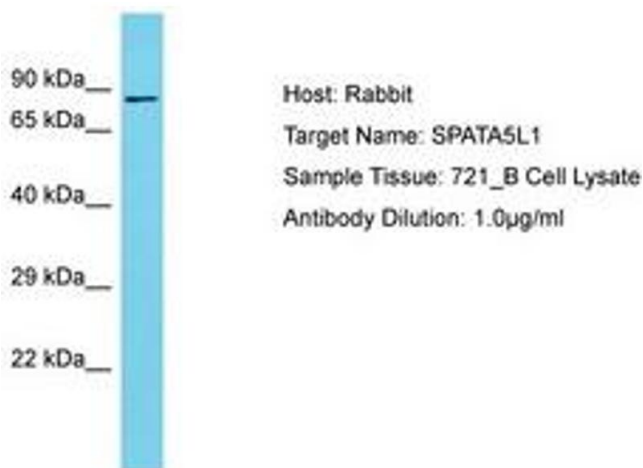
Storage: 4 °C, -20 °C

Storage Comment: Long term: -20°C, the use of 50% glycerol is recommended if storing aliquots in -20°C for long term use (up to 1 year)

Short term (less than 1 week): 4°C. Avoid freeze-thaw cycles.

## Images

---



**Image 1.**