



[Go to Product page](#)

Datasheet for ABIN6750666
anti-TRAPPC6A antibody (AA 21-70)

1 Image

Overview

Quantity:	100 µL
Target:	TRAPPC6A
Binding Specificity:	AA 21-70
Reactivity:	Human
Host:	Rabbit
Clonality:	Polyclonal
Conjugate:	This TRAPPC6A antibody is un-conjugated
Application:	Western Blotting (WB)

Product Details

Immunogen:	Synthetic peptide located between aa21-70 of human TRAPPC6A (O75865-2, NP_077013). Percent identity by BLAST analysis: Human (100%). Type of Immunogen: Synthetic peptide
Specificity:	Human TRAPPC6A
Purification:	Immunoaffinity purified

Target Details

Target:	TRAPPC6A
Alternative Name:	TRAPPC6A (TRAPPC6A Products)
Background:	Name/Gene ID: TRAPPC6A

Target Details

Synonyms: TRAPPC6A, TRAPP complex subunit 6A, TRS33, HSPC289

Gene ID: 79090

NCBI Accession: [NP_077013](#)

UniProt: [O75865](#)

Application Details

Application Notes: Optimal working dilution should be determined by the investigator.

Comment: Target Species of Antibody: Human

Restrictions: For Research Use only

Handling

Format: Lyophilized

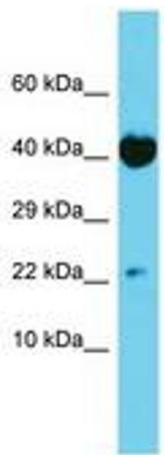
Reconstitution: Distilled water

Concentration: Lot specific

Buffer: Lyophilized from PBS

Storage: 4 °C, -20 °C

Storage Comment: Long term: -20°C, the use of 50% glycerol is recommended if storing aliquots in -20°C for long term use (up to 1 year)
Short term (less than 1 week): 4°C. Avoid freeze-thaw cycles.



Host: Rabbit
Target Name: TRAPPC6A
Sample Tissue: HT1080 Cell Lysate
Antibody Dilution: 1.0µg/ml

Image 1.