



[Go to Product page](#)

Datasheet for ABIN6750667
anti-C9orf16 antibody (C-Term)

1 Image

Overview

Quantity:	100 µL
Target:	C9orf16
Binding Specificity:	C-Term
Reactivity:	Human, Horse, Pig
Host:	Rabbit
Clonality:	Polyclonal
Conjugate:	This C9orf16 antibody is un-conjugated
Application:	Western Blotting (WB)

Product Details

Immunogen:	Synthetic peptide from C-Terminus of human C9orf16 (Q9BUW7, NP_077017). Percent identity by BLAST analysis: Human, Chimpanzee, Horse, Pig (100%). Type of Immunogen: Synthetic peptide
Specificity:	Human C9orf16
Purification:	Immunoaffinity purified

Target Details

Target:	C9orf16
Alternative Name:	C9orf16 (C9orf16 Products)
Background:	Name/Gene ID: C9orf16

Target Details

Synonyms: C9orf16, EST00098, UPF0184 protein C9orf16

Gene ID: 79095

NCBI Accession: [NP_077017](#)

UniProt: [Q9BUW7](#)

Application Details

Application Notes: Optimal working dilution should be determined by the investigator.

Comment: Target Species of Antibody: Human

Restrictions: For Research Use only

Handling

Format: Lyophilized

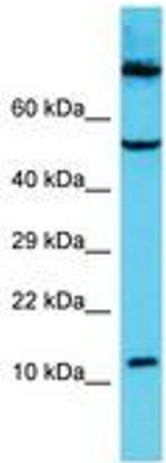
Reconstitution: Distilled water

Concentration: Lot specific

Buffer: Lyophilized from PBS

Storage: 4 °C, -20 °C

Storage Comment: Long term: -20°C, the use of 50% glycerol is recommended if storing aliquots in -20°C for long term use (up to 1 year)
Short term (less than 1 week): 4°C. Avoid freeze-thaw cycles.



Host: Rabbit
Target Name: C9orf16
Sample Tissue: HCT15 Cell Lysate
Antibody Dilution: 1.0µg/ml

Image 1.