



[Go to Product page](#)

Datasheet for ABIN6750678
anti-SHCBP1 antibody (AA 526-575)

1 Image

Overview

Quantity:	100 µL
Target:	SHCBP1
Binding Specificity:	AA 526-575
Reactivity:	Human
Host:	Rabbit
Clonality:	Polyclonal
Conjugate:	This SHCBP1 antibody is un-conjugated
Application:	Western Blotting (WB)

Product Details

Immunogen:	Synthetic peptide located between aa526-575 of human SHCBP1 (Q8NEM2, NP_079021). Percent identity by BLAST analysis: Human, Chimpanzee (100%). Type of Immunogen: Synthetic peptide
Specificity:	Human SHCBP1
Purification:	Immunoaffinity purified

Target Details

Target:	SHCBP1
Alternative Name:	SHCBP1 (SHCBP1 Products)
Background:	Name/Gene ID: SHCBP1

Target Details

Synonyms: SHCBP1, PAL

Gene ID: 79801

NCBI Accession: [NP_079021](#)

UniProt: [Q8NEM2](#)

Application Details

Application Notes: Optimal working dilution should be determined by the investigator.

Comment: Target Species of Antibody: Human

Restrictions: For Research Use only

Handling

Format: Lyophilized

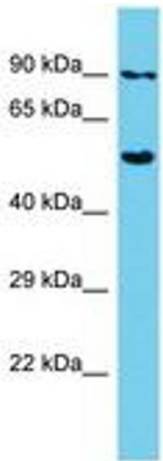
Reconstitution: Distilled water

Concentration: Lot specific

Buffer: Lyophilized from PBS

Storage: 4 °C, -20 °C

Storage Comment: Long term: -20°C, the use of 50% glycerol is recommended if storing aliquots in -20°C for long term use (up to 1 year)
Short term (less than 1 week): 4°C. Avoid freeze-thaw cycles.



Host: Rabbit
Target Name: SHCBP1
Sample Tissue: HepG2 Cell Lysate
Antibody Dilution: 1.0µg/ml

Image 1.