



[Go to Product page](#)

Datasheet for ABIN6750680
anti-EFCC1 antibody (AA 319-368)

1 Image

Overview

Quantity:	100 µL
Target:	EFCC1 (CCDC48)
Binding Specificity:	AA 319-368
Reactivity:	Human
Host:	Rabbit
Clonality:	Polyclonal
Conjugate:	This EFCC1 antibody is un-conjugated
Application:	Western Blotting (WB)

Product Details

Immunogen:	Synthetic peptide located between aa319-368 of human EFCC1 (Q9HA90, NP_079044). Percent identity by BLAST analysis: Human (100%). Type of Immunogen: Synthetic peptide
Specificity:	Human CCDC48
Purification:	Immunoaffinity purified

Target Details

Target:	EFCC1 (CCDC48)
Alternative Name:	EFCC1 (CCDC48 Products)
Background:	Name/Gene ID: EFCC1

Target Details

Synonyms: EFCC1, C3orf73, CCDC48

Gene ID: 79825

NCBI Accession: [NP_079044](#)

UniProt: [Q9HA90](#)

Application Details

Application Notes: Optimal working dilution should be determined by the investigator.

Comment: Target Species of Antibody: Human

Restrictions: For Research Use only

Handling

Format: Lyophilized

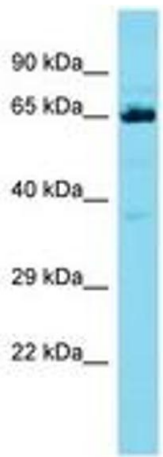
Reconstitution: Distilled water

Concentration: Lot specific

Buffer: Lyophilized from PBS

Storage: 4 °C, -20 °C

Storage Comment: Long term: -20°C, the use of 50% glycerol is recommended if storing aliquots in -20°C for long term use (up to 1 year)
Short term (less than 1 week): 4°C. Avoid freeze-thaw cycles.



Host: Rabbit
Target Name: CCDC48
Sample Tissue: HT1080 Cell Lysate
Antibody Dilution: 1.0µg/ml

Image 1.