



[Go to Product page](#)

Datasheet for ABIN6750684

## anti-SLC35E1 antibody (AA 323-372)

### 1 Image

#### Overview

Quantity:	100 µL
Target:	SLC35E1
Binding Specificity:	AA 323-372
Reactivity:	Human
Host:	Rabbit
Clonality:	Polyclonal
Conjugate:	This SLC35E1 antibody is un-conjugated
Application:	Western Blotting (WB)

#### Product Details

Immunogen:	Synthetic peptide located between aa323-372 of human SLC35E1 (Q96K37, NP_079157). Percent identity by BLAST analysis: Human, Chimpanzee (100%).  Type of Immunogen: Synthetic peptide
Specificity:	Human SLC35E1
Purification:	Immunoaffinity purified

#### Target Details

Target:	SLC35E1
Alternative Name:	SLC35E1 ( <a href="#">SLC35E1 Products</a> )
Background:	Name/Gene ID: SLC35E1

## Target Details

---

Family: Transporter

Synonyms: SLC35E1

Gene ID: 79939

NCBI Accession: [NP\\_079157](#)

UniProt: [Q96K37](#)

## Application Details

---

Application Notes: Optimal working dilution should be determined by the investigator.

Comment: Target Species of Antibody: Human

Restrictions: For Research Use only

## Handling

---

Format: Lyophilized

Reconstitution: Distilled water

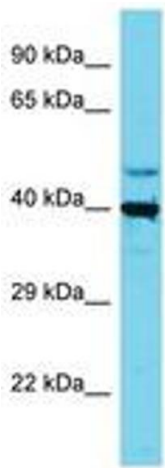
Concentration: Lot specific

Buffer: Lyophilized from PBS

Storage: 4 °C, -20 °C

Storage Comment: Long term: -20°C, the use of 50% glycerol is recommended if storing aliquots in -20°C for long term use (up to 1 year)

Short term (less than 1 week): 4°C. Avoid freeze-thaw cycles.



Host: Rabbit  
Target Name: SLC35E1  
Sample Tissue: HepG2 Cell Lysate  
Antibody Dilution: 1.0µg/ml

Image 1.