



[Go to Product page](#)

Datasheet for ABIN6750689

anti-C4ORF29 antibody (AA 122-171)

1 Image

Overview

Quantity:	100 µL
Target:	C4ORF29
Binding Specificity:	AA 122-171
Reactivity:	Mouse, Human, Rabbit
Host:	Rabbit
Clonality:	Polyclonal
Conjugate:	This C4ORF29 antibody is un-conjugated
Application:	Western Blotting (WB)

Product Details

Immunogen:	Synthetic peptide located between aa122-171 of human C4orf29 (Q0P651, NP_001034806). Percent identity by BLAST analysis: Human, Chimpanzee, Mouse, Rabbit (100%). Type of Immunogen: Synthetic peptide
Specificity:	Human C4orf29
Purification:	Immunoaffinity purified

Target Details

Target:	C4ORF29
Alternative Name:	C4orf29 (C4ORF29 Products)
Background:	Name/Gene ID: C4orf29

Target Details

Synonyms: C4orf29

Gene ID: 80167

NCBI Accession: [NP_001034806](#)

UniProt: [Q0P651](#)

Application Details

Application Notes: Optimal working dilution should be determined by the investigator.

Comment: Target Species of Antibody: Human

Restrictions: For Research Use only

Handling

Format: Lyophilized

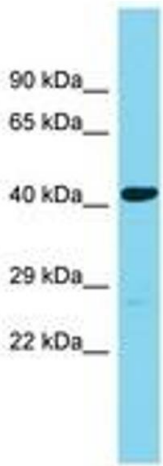
Reconstitution: Distilled water

Concentration: Lot specific

Buffer: Lyophilized from PBS

Storage: 4 °C, -20 °C

Storage Comment: Long term: -20°C, the use of 50% glycerol is recommended if storing aliquots in -20°C for long term use (up to 1 year)
Short term (less than 1 week): 4°C. Avoid freeze-thaw cycles.



Host: Rabbit
Target Name: C4orf29
Sample Tissue: Fetal Heart Lysate
Antibody Dilution: 1.0µg/ml

Image 1.