



[Go to Product page](#)

Datasheet for ABIN6750691
anti-ARMC9 antibody (AA 90-139)

1 Image

Overview

| | |
|----------------------|--------------------------------------|
| Quantity: | 100 µL |
| Target: | ARMC9 |
| Binding Specificity: | AA 90-139 |
| Reactivity: | Human |
| Host: | Rabbit |
| Clonality: | Polyclonal |
| Conjugate: | This ARMC9 antibody is un-conjugated |
| Application: | Western Blotting (WB) |

Product Details

| | |
|---------------|---|
| Immunogen: | Synthetic peptide located between aa90-139 of human ARMC9 (Q7Z3E5-2, NP_079415). Percent identity by BLAST analysis: Human (100%). Type of Immunogen: Synthetic peptide |
| Specificity: | Human ARMC9 |
| Purification: | Immunoaffinity purified |

Target Details

| | |
|-------------------|--|
| Target: | ARMC9 |
| Alternative Name: | ARMC9 (ARMC9 Products) |
| Background: | Name/Gene ID: ARMC9 |

Target Details

Synonyms: ARMC9, ARM, Armadillo repeat containing 9, KIAA1868, KU-MEL-1, NS21

Gene ID: 80210

NCBI Accession: [NP_079415](#)

UniProt: [Q7Z3E5](#)

Application Details

Application Notes: Optimal working dilution should be determined by the investigator.

Comment: Target Species of Antibody: Human

Restrictions: For Research Use only

Handling

Format: Lyophilized

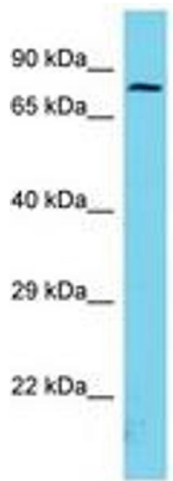
Reconstitution: Distilled water

Concentration: Lot specific

Buffer: Lyophilized from PBS

Storage: 4 °C, -20 °C

Storage Comment: Long term: -20°C, the use of 50% glycerol is recommended if storing aliquots in -20°C for long term use (up to 1 year)
Short term (less than 1 week): 4°C. Avoid freeze-thaw cycles.



Host: Rabbit
Target Name: ARMC9
Sample Tissue: Jurkat Cell Lysate
Antibody Dilution: 1.0µg/ml

Image 1.