



[Go to Product page](#)

Datasheet for ABIN6750710  
**anti-FAM222A antibody (AA 76-125)**

1 Image

Overview

Quantity:	100 µL
Target:	FAM222A
Binding Specificity:	AA 76-125
Reactivity:	Human
Host:	Rabbit
Clonality:	Polyclonal
Conjugate:	This FAM222A antibody is un-conjugated
Application:	Western Blotting (WB)

Product Details

Immunogen:	Synthetic peptide located between aa76-125 of human FAM222A (Q5U5X8, NP_116218). Percent identity by BLAST analysis: Human, Chimpanzee (100%).  Type of Immunogen: Synthetic peptide
Specificity:	Human C12orf34
Purification:	Immunoaffinity purified

Target Details

Target:	FAM222A
Alternative Name:	C12orf34 ( <a href="#">FAM222A Products</a> )
Background:	Name/Gene ID: FAM222A

## Target Details

---

Synonyms: FAM222A, C12orf34, Protein FAM222A

Gene ID: 84915

NCBI Accession: [NP\\_116218](#)

## Application Details

---

Application Notes: Optimal working dilution should be determined by the investigator.

Comment: Target Species of Antibody: Human

Restrictions: For Research Use only

## Handling

---

Format: Lyophilized

Reconstitution: Distilled water

Concentration: Lot specific

Buffer: Lyophilized from PBS

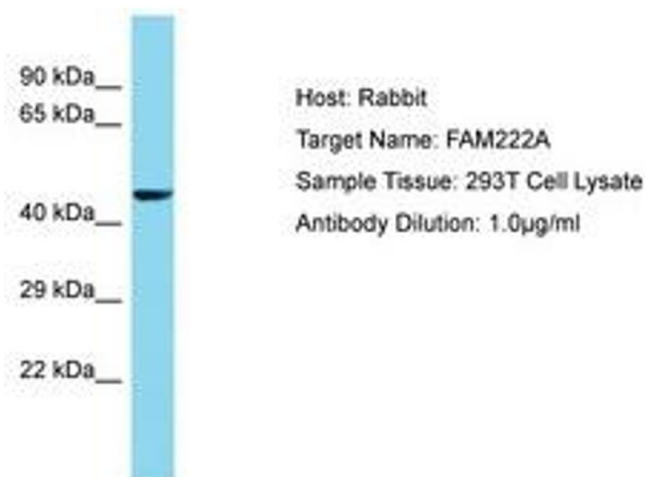
Storage: 4 °C, -20 °C

Storage Comment: Long term: -20°C, the use of 50% glycerol is recommended if storing aliquots in -20°C for long term use (up to 1 year)

Short term (less than 1 week): 4°C. Avoid freeze-thaw cycles.

## Images

---



**Image 1.**