



[Go to Product page](#)

Datasheet for ABIN6750711  
**anti-C8orf76 antibody (AA 61-110)**

1 Image

### Overview

Quantity:	100 µL
Target:	C8orf76
Binding Specificity:	AA 61-110
Reactivity:	Human
Host:	Rabbit
Clonality:	Polyclonal
Conjugate:	This C8orf76 antibody is un-conjugated
Application:	Western Blotting (WB)

### Product Details

Immunogen:	Synthetic peptide located between aa61-110 of human C8orf76 (Q96K31, NP_116236). Percent identity by BLAST analysis: Human (100%). Type of Immunogen: Synthetic peptide
Specificity:	Human C8orf76
Purification:	Immunoaffinity purified

### Target Details

Target:	C8orf76
Alternative Name:	C8orf76 ( <a href="#">C8orf76 Products</a> )
Background:	Name/Gene ID: C8orf76

## Target Details

---

Synonyms: C8orf76

Gene ID: 84933

NCBI Accession: [NP\\_116236](#)

UniProt: [Q96K31](#)

## Application Details

---

Application Notes: Optimal working dilution should be determined by the investigator.

Comment: Target Species of Antibody: Human

Restrictions: For Research Use only

## Handling

---

Format: Lyophilized

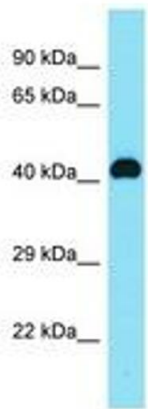
Reconstitution: Distilled water

Concentration: Lot specific

Buffer: Lyophilized from PBS

Storage: 4 °C, -20 °C

Storage Comment: Long term: -20°C, the use of 50% glycerol is recommended if storing aliquots in -20°C for long term use (up to 1 year)  
Short term (less than 1 week): 4°C. Avoid freeze-thaw cycles.



Host: Rabbit  
Target Name: C8orf76  
Sample Tissue: MDA-MB-435S Cell Lysate  
Antibody Dilution: 1.0µg/ml

Image 1.