

Datasheet for ABIN6750718  
**anti-CCDC97 antibody (C-Term)**



[Go to Product page](#)

1 Image

Overview

Quantity:	100 µL
Target:	CCDC97
Binding Specificity:	C-Term
Reactivity:	Human, Cow, Horse, Pig
Host:	Rabbit
Clonality:	Polyclonal
Conjugate:	This CCDC97 antibody is un-conjugated
Application:	Western Blotting (WB)

Product Details

Immunogen:	Synthetic peptide from C-Terminus of human CCDC97 (Q96F63, NP_443080). Percent identity by BLAST analysis: Human, Chimpanzee, Bovine, Horse, Pig (100%).  Type of Immunogen: Synthetic peptide
Specificity:	Human CCDC97
Purification:	Immunoaffinity purified

Target Details

Target:	CCDC97
Alternative Name:	CCDC97 ( <a href="#">CCDC97 Products</a> )
Background:	Name/Gene ID: CCDC97

## Target Details

---

Synonyms: CCDC97

Gene ID: 90324

NCBI Accession: [NP\\_443080](#)

UniProt: [Q96F63](#)

## Application Details

---

Application Notes: Optimal working dilution should be determined by the investigator.

Comment: Target Species of Antibody: Human

Restrictions: For Research Use only

## Handling

---

Format: Lyophilized

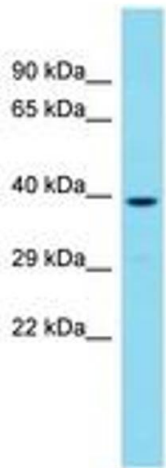
Reconstitution: Distilled water

Concentration: Lot specific

Buffer: Lyophilized from PBS

Storage: 4 °C, -20 °C

Storage Comment: Long term: -20°C, the use of 50% glycerol is recommended if storing aliquots in -20°C for long term use (up to 1 year)  
Short term (less than 1 week): 4°C. Avoid freeze-thaw cycles.



Host: Rabbit  
Target Name: CCDC97  
Sample Tissue: 721\_B Cell Lysate  
Antibody Dilution: 1.0µg/ml

Image 1.