



Datasheet for ABIN6750721  
**anti-MLIP antibody (AA 194-243)**



[Go to Product page](#)

1 Image

Overview

Quantity:	100 µL
Target:	MLIP
Binding Specificity:	AA 194-243
Reactivity:	Human
Host:	Rabbit
Clonality:	Polyclonal
Conjugate:	This MLIP antibody is un-conjugated
Application:	Western Blotting (WB)

Product Details

Immunogen:	Synthetic peptide located between aa194-243 of human MLIP (Q5VWP3, NP_612636). Percent identity by BLAST analysis: Human (100%). Type of Immunogen: Synthetic peptide
Specificity:	Human MLIP
Purification:	Immunoaffinity purified

Target Details

Target:	MLIP
Alternative Name:	MLIP ( <a href="#">MLIP Products</a> )
Background:	Name/Gene ID: MLIP

## Target Details

---

Synonyms: MLIP, C6orf142

Gene ID: 90523

NCBI Accession: [NP\\_612636](#)

UniProt: [Q5VWP3](#)

## Application Details

---

Application Notes: Optimal working dilution should be determined by the investigator.

Comment: Target Species of Antibody: Human

Restrictions: For Research Use only

## Handling

---

Format: Lyophilized

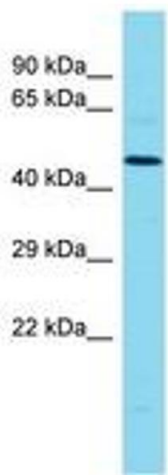
Reconstitution: Distilled water

Concentration: Lot specific

Buffer: Lyophilized from PBS

Storage: 4 °C, -20 °C

Storage Comment: Long term: -20°C, the use of 50% glycerol is recommended if storing aliquots in -20°C for long term use (up to 1 year)  
Short term (less than 1 week): 4°C. Avoid freeze-thaw cycles.



Host: Rabbit  
Target Name: MLIP  
Sample Tissue: MCF7 Cell Lysate  
Antibody Dilution: 1.0µg/ml

Image 1.