



Datasheet for ABIN6750736
anti-C1ORF158 antibody (AA 25-74)



[Go to Product page](#)

1 Image

Overview

Quantity:	100 µL
Target:	C1ORF158
Binding Specificity:	AA 25-74
Reactivity:	Human
Host:	Rabbit
Clonality:	Polyclonal
Conjugate:	This C1ORF158 antibody is un-conjugated
Application:	Western Blotting (WB)

Product Details

Immunogen:	Synthetic peptide located between aa25-74 of human C1orf158 (Q8N1D5, NP_689503). Percent identity by BLAST analysis: Human, Chimpanzee (100%). Type of Immunogen: Synthetic peptide
Specificity:	Human C1orf158
Purification:	Immunoaffinity purified

Target Details

Target:	C1ORF158
Alternative Name:	C1orf158 (C1ORF158 Products)
Background:	Name/Gene ID: C1orf158

Target Details

Synonyms: C1orf158, RP11-474021.4

Gene ID: 93190

NCBI Accession: [NP_689503](#)

UniProt: [Q8N1D5](#)

Application Details

Application Notes: Optimal working dilution should be determined by the investigator.

Comment: Target Species of Antibody: Human

Restrictions: For Research Use only

Handling

Format: Lyophilized

Reconstitution: Distilled water

Concentration: Lot specific

Buffer: Lyophilized from PBS

Storage: 4 °C, -20 °C

Storage Comment: Long term: -20°C, the use of 50% glycerol is recommended if storing aliquots in -20°C for long term use (up to 1 year)
Short term (less than 1 week): 4°C. Avoid freeze-thaw cycles.

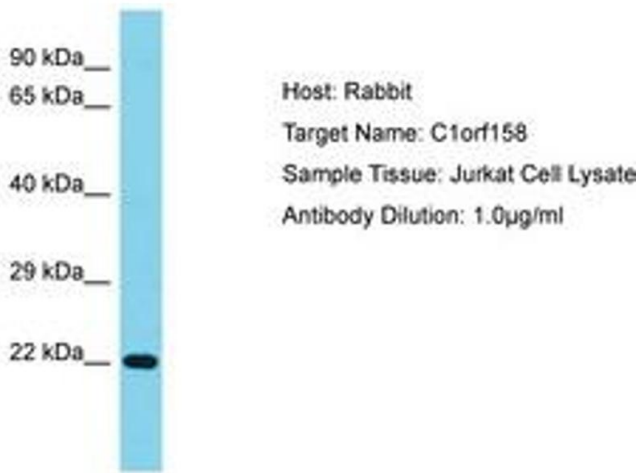


Image 1.