



[Go to Product page](#)

Datasheet for ABIN6750748

## anti-PNLIPRP3 antibody (AA 389-438)

### 1 Image

#### Overview

Quantity:	100 µL
Target:	PNLIPRP3
Binding Specificity:	AA 389-438
Reactivity:	Human
Host:	Rabbit
Clonality:	Polyclonal
Conjugate:	This PNLIPRP3 antibody is un-conjugated
Application:	Western Blotting (WB)

#### Product Details

Immunogen:	Synthetic peptide located between aa389-438 of human PNLIPRP3 (Q17RR3, NP_001011709). Percent identity by BLAST analysis: Human, Chimpanzee (100%).  Type of Immunogen: Synthetic peptide
Specificity:	Human PNLIPRP3
Purification:	Immunoaffinity purified

#### Target Details

Target:	PNLIPRP3
Alternative Name:	PNLIPRP3 ( <a href="#">PNLIPRP3 Products</a> )
Background:	Name/Gene ID: PNLIPRP3

## Target Details

---

Synonyms: PNLIPRP3, PL-RP3

Gene ID: 119548

NCBI Accession: [NP\\_001011709](#)

UniProt: [Q17RR3](#)

## Application Details

---

Application Notes: Optimal working dilution should be determined by the investigator.

Comment: Target Species of Antibody: Human

Restrictions: For Research Use only

## Handling

---

Format: Lyophilized

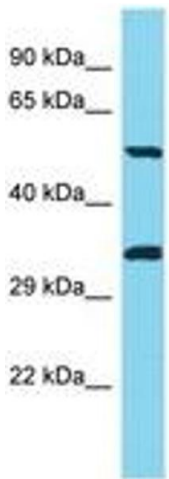
Reconstitution: Distilled water

Concentration: Lot specific

Buffer: Lyophilized from PBS

Storage: 4 °C, -20 °C

Storage Comment: Long term: -20°C, the use of 50% glycerol is recommended if storing aliquots in -20°C for long term use (up to 1 year)  
Short term (less than 1 week): 4°C. Avoid freeze-thaw cycles.



Host: Rabbit  
Target Name: PNLIPRP3  
Sample Tissue: Jurkat Cell Lysate  
Antibody Dilution: 1.0µg/ml

Image 1.