



[Go to Product page](#)

Datasheet for ABIN6750752  
**anti-KDF1 antibody (C-Term)**

1 Image

Overview

Quantity:	100 µL
Target:	KDF1
Binding Specificity:	C-Term
Reactivity:	Human, Cow, Guinea Pig
Host:	Rabbit
Clonality:	Polyclonal
Conjugate:	This KDF1 antibody is un-conjugated
Application:	Western Blotting (WB)

Product Details

Immunogen:	Synthetic peptide from C-Terminus of human C1orf172 (Q8NAX2, NP_689578). Percent identity by BLAST analysis: Human, Bovine, Guinea pig (100%). Type of Immunogen: Synthetic peptide
Specificity:	Human C1orf172
Purification:	Immunoaffinity purified

Target Details

Target:	KDF1
Alternative Name:	KDF1 / C1orf172 ( <a href="#">KDF1 Products</a> )
Background:	Name/Gene ID: KDF1

## Target Details

---

Synonyms: KDF1, C1orf172, RP11-344H11.3

Gene ID: 126695

NCBI Accession: [NP\\_689578](#)

UniProt: [Q8NAX2](#)

## Application Details

---

Application Notes: Optimal working dilution should be determined by the investigator.

Comment: Target Species of Antibody: Human

Restrictions: For Research Use only

## Handling

---

Format: Lyophilized

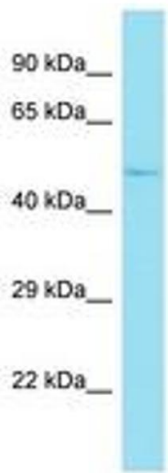
Reconstitution: Distilled water

Concentration: Lot specific

Buffer: Lyophilized from PBS

Storage: 4 °C, -20 °C

Storage Comment: Long term: -20°C, the use of 50% glycerol is recommended if storing aliquots in -20°C for long term use (up to 1 year)  
Short term (less than 1 week): 4°C. Avoid freeze-thaw cycles.



Host: Rabbit  
Target Name: C1orf172  
Sample Tissue: Fetal Brain Lysate  
Antibody Dilution: 1.0µg/ml

Image 1.