



[Go to Product page](#)

Datasheet for ABIN6750760

anti-C14orf166B antibody (AA 26-75)

1 Image

Overview

Quantity:	100 µL
Target:	C14orf166B (C14ORF166B)
Binding Specificity:	AA 26-75
Reactivity:	Human
Host:	Rabbit
Clonality:	Polyclonal
Conjugate:	This C14orf166B antibody is un-conjugated
Application:	Western Blotting (WB)

Product Details

Immunogen:	Synthetic peptide located between aa26-75 of human C14orf166B (Q0VAA2, NP_919263). Percent identity by BLAST analysis: Human (100%). Type of Immunogen: Synthetic peptide
Specificity:	Human C14orf166B
Purification:	Immunoaffinity purified

Target Details

Target:	C14orf166B (C14ORF166B)
Alternative Name:	LRRC74A (C14ORF166B Products)
Background:	Name/Gene ID: LRRC74A

Target Details

Synonyms: LRRRC74A, C14orf166B

Gene ID: 145497

NCBI Accession: [NP_919263](#)

UniProt: [Q0VAA2](#)

Application Details

Application Notes: Optimal working dilution should be determined by the investigator.

Comment: Target Species of Antibody: Human

Restrictions: For Research Use only

Handling

Format: Lyophilized

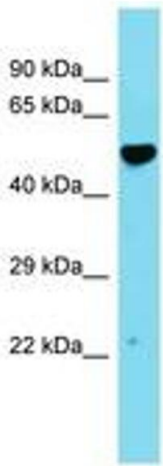
Reconstitution: Distilled water

Concentration: Lot specific

Buffer: Lyophilized from PBS

Storage: 4 °C, -20 °C

Storage Comment: Long term: -20°C, the use of 50% glycerol is recommended if storing aliquots in -20°C for long term use (up to 1 year)
Short term (less than 1 week): 4°C. Avoid freeze-thaw cycles.



Host: Rabbit
Target Name: C14orf166B
Sample Tissue: Fetal Heart Lysate
Antibody Dilution: 1.0µg/ml

Image 1.