



[Go to Product page](#)

Datasheet for ABIN6750788
anti-CCDC141 antibody (AA 639-688)

1 Image

Overview

Quantity:	100 µL
Target:	CCDC141
Binding Specificity:	AA 639-688
Reactivity:	Human
Host:	Rabbit
Clonality:	Polyclonal
Conjugate:	This CCDC141 antibody is un-conjugated
Application:	Western Blotting (WB)

Product Details

Immunogen:	Synthetic peptide located between aa639-688 of human CCDC141 (H7C0P1, NP_775919). Percent identity by BLAST analysis: Human, Chimpanzee (100%). Type of Immunogen: Synthetic peptide
Specificity:	Human CCDC141
Purification:	Immunoaffinity purified

Target Details

Target:	CCDC141
Alternative Name:	CCDC141 (CCDC141 Products)
Background:	Name/Gene ID: CCDC141

Target Details

Synonyms: CCDC141, CAMDI

Gene ID: 285025

NCBI Accession: [NP_775919](#)

UniProt: [Q6ZP82](#)

Application Details

Application Notes: Optimal working dilution should be determined by the investigator.

Comment: Target Species of Antibody: Human

Restrictions: For Research Use only

Handling

Format: Lyophilized

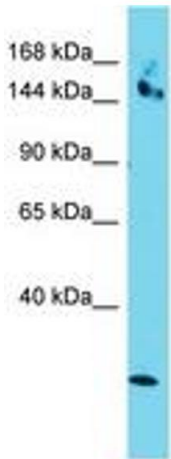
Reconstitution: Distilled water

Concentration: Lot specific

Buffer: Lyophilized from PBS

Storage: 4 °C, -20 °C

Storage Comment: Long term: -20°C, the use of 50% glycerol is recommended if storing aliquots in -20°C for long term use (up to 1 year)
Short term (less than 1 week): 4°C. Avoid freeze-thaw cycles.



Host: Rabbit
Target Name: CCDC141
Sample Tissue: HepG2 Cell Lysate
Antibody Dilution: 1.0µg/ml

Image 1.