



Datasheet for ABIN6750790
anti-C3ORF70 antibody (AA 170-219)



[Go to Product page](#)

1 Image

Overview

Quantity:	100 µL
Target:	C3ORF70
Binding Specificity:	AA 170-219
Reactivity:	Human, Cow, Horse
Host:	Rabbit
Clonality:	Polyclonal
Conjugate:	This C3ORF70 antibody is un-conjugated
Application:	Western Blotting (WB)

Product Details

Immunogen:	Synthetic peptide located between aa170-219 of human C3orf70 (A6NLC5, NP_001020437). Percent identity by BLAST analysis: Human, Chimpanzee, Bovine, Horse (100%). Type of Immunogen: Synthetic peptide
Specificity:	Human C3orf70
Purification:	Immunoaffinity purified

Target Details

Target:	C3ORF70
Alternative Name:	C3orf70 (C3ORF70 Products)
Background:	Name/Gene ID: C3orf70

Target Details

Synonyms: C3orf70, UPF0524 protein C3orf70

Gene ID: 285382

NCBI Accession: [NP_001020437](#)

UniProt: [A6NLC5](#)

Application Details

Application Notes: Optimal working dilution should be determined by the investigator.

Comment: Target Species of Antibody: Human

Restrictions: For Research Use only

Handling

Format: Lyophilized

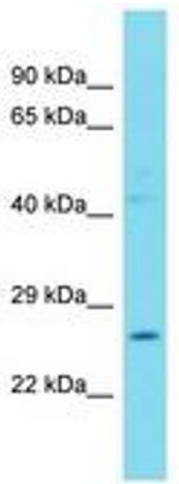
Reconstitution: Distilled water

Concentration: Lot specific

Buffer: Lyophilized from PBS

Storage: 4 °C, -20 °C

Storage Comment: Long term: -20°C, the use of 50% glycerol is recommended if storing aliquots in -20°C for long term use (up to 1 year)
Short term (less than 1 week): 4°C. Avoid freeze-thaw cycles.



Host: Rabbit
Target Name: C3orf70
Sample Tissue: Placenta Lysate
Antibody Dilution: 1.0µg/ml

Image 1.