



[Go to Product page](#)

Datasheet for ABIN6750795
anti-CD200R1L antibody (AA 87-136)

1 Image

Overview

Quantity:	100 µL
Target:	CD200R1L
Binding Specificity:	AA 87-136
Reactivity:	Human
Host:	Rabbit
Clonality:	Polyclonal
Conjugate:	This CD200R1L antibody is un-conjugated
Application:	Western Blotting (WB)

Product Details

Immunogen:	Synthetic peptide located between aa87-136 of human CD200R1L (Q6Q8B3, NP_001008784). Percent identity by BLAST analysis: Human (100%). Type of Immunogen: Synthetic peptide
Specificity:	Human CD200R1L
Purification:	Immunoaffinity purified

Target Details

Target:	CD200R1L
Alternative Name:	CD200R1L (CD200R1L Products)
Background:	Name/Gene ID: CD200R1L

Target Details

Synonyms: CD200R1L, CD200 receptor 1-like, CD200 receptor-like 2, CD200 receptor 2, CD200R2, CD200RLa, HuCD200R2

Gene ID: 344807

NCBI Accession: [NP_001008784](#)

UniProt: [Q6Q8B3](#)

Application Details

Application Notes: Optimal working dilution should be determined by the investigator.

Comment: Target Species of Antibody: Human

Restrictions: For Research Use only

Handling

Format: Lyophilized

Reconstitution: Distilled water

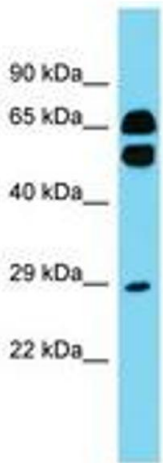
Concentration: Lot specific

Buffer: Lyophilized from PBS

Storage: 4 °C, -20 °C

Storage Comment: Long term: -20°C, the use of 50% glycerol is recommended if storing aliquots in -20°C for long term use (up to 1 year)

Short term (less than 1 week): 4°C. Avoid freeze-thaw cycles.



Host: Rabbit
Target Name: CD200R1L
Sample Tissue: Fetal Heart Lysate
Antibody Dilution: 1.0µg/ml

Image 1.