

Datasheet for ABIN6750804  
**anti-SLC22A25 antibody (AA 271-320)**



[Go to Product page](#)

1 Image

## Overview

Quantity:	100 µL
Target:	SLC22A25
Binding Specificity:	AA 271-320
Reactivity:	Human
Host:	Rabbit
Clonality:	Polyclonal
Conjugate:	This SLC22A25 antibody is un-conjugated
Application:	Western Blotting (WB)

## Product Details

Immunogen:	Synthetic peptide located between aa271-320 of human SLC22A25 (Q6T423, NP_955384). Percent identity by BLAST analysis: Human (100%).  Type of Immunogen: Synthetic peptide
Specificity:	Human SLC22A25
Purification:	Immunoaffinity purified

## Target Details

Target:	SLC22A25
Alternative Name:	SLC22A25 ( <a href="#">SLC22A25 Products</a> )
Background:	Name/Gene ID: SLC22A25

## Target Details

---

Synonyms: SLC22A25, HIMTP, Organic anion transporter UST6, UST6

Gene ID: 387601

NCBI Accession: [NP\\_955384](#)

UniProt: [Q6T423](#)

## Application Details

---

Application Notes: Optimal working dilution should be determined by the investigator.

Comment: Target Species of Antibody: Human

Restrictions: For Research Use only

## Handling

---

Format: Lyophilized

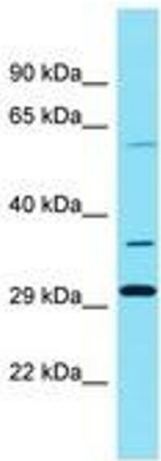
Reconstitution: Distilled water

Concentration: Lot specific

Buffer: Lyophilized from PBS

Storage: 4 °C, -20 °C

Storage Comment: Long term: -20°C, the use of 50% glycerol is recommended if storing aliquots in -20°C for long term use (up to 1 year)  
Short term (less than 1 week): 4°C. Avoid freeze-thaw cycles.



Host: Rabbit  
Target Name: SLC22A25  
Sample Tissue: PANC1 Cell Lysate  
Antibody Dilution: 1.0µg/ml

Image 1.