



Datasheet for ABIN6750810
anti-OR6C1 antibody (AA 227-276)



[Go to Product page](#)

1 Image

Overview

Quantity:	100 µL
Target:	OR6C1
Binding Specificity:	AA 227-276
Reactivity:	Human
Host:	Rabbit
Clonality:	Polyclonal
Conjugate:	This OR6C1 antibody is un-conjugated
Application:	Western Blotting (WB)

Product Details

Immunogen:	Synthetic peptide located between aa227-276 of human OR6C1 (Q96RD1, NP_001005182). Percent identity by BLAST analysis: Human (100%). Type of Immunogen: Synthetic peptide
Specificity:	Human OR6C1
Purification:	Immunoaffinity purified

Target Details

Target:	OR6C1
Alternative Name:	OR6C1 (OR6C1 Products)
Background:	Name/Gene ID: OR6C1

Target Details

Subfamily: Olfactory

Family: GPCR

Synonyms: OR6C1, Olfactory receptor 6C1, OST267

Gene ID: 390321

NCBI Accession: [NP_001005182](#)

UniProt: [Q96RD1](#)

Application Details

Application Notes: Optimal working dilution should be determined by the investigator.

Comment: Target Species of Antibody: Human

Restrictions: For Research Use only

Handling

Format: Lyophilized

Reconstitution: Distilled water

Concentration: Lot specific

Buffer: Lyophilized from PBS

Storage: 4 °C, -20 °C

Storage Comment: Long term: -20°C, the use of 50% glycerol is recommended if storing aliquots in -20°C for long term use (up to 1 year)
Short term (less than 1 week): 4°C. Avoid freeze-thaw cycles.

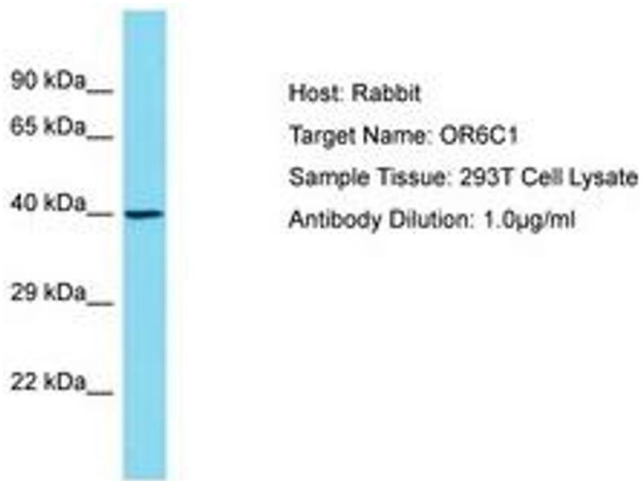


Image 1.