



[Go to Product page](#)

Datasheet for ABIN6750813
anti-FAM221B antibody (AA 151-200)

1 Image

Overview

Quantity:	100 µL
Target:	FAM221B
Binding Specificity:	AA 151-200
Reactivity:	Human
Host:	Rabbit
Clonality:	Polyclonal
Conjugate:	This FAM221B antibody is un-conjugated
Application:	Western Blotting (WB)

Product Details

Immunogen:	Synthetic peptide located between aa151-200 of human FAM221B (A6H8Z2, NP_001012448). Type of Immunogen: Synthetic peptide
Specificity:	Human C9orf128
Purification:	Immunoaffinity purified

Target Details

Target:	FAM221B
Alternative Name:	FAM221B / C9orf128 (FAM221B Products)
Background:	Name/Gene ID: FAM221B

Target Details

Synonyms: FAM221B, C9orf128, Protein FAM221B

Gene ID: 392307

NCBI Accession: [NP_001012448](#)

UniProt: [A6H8Z2](#)

Application Details

Application Notes: Optimal working dilution should be determined by the investigator.

Comment: Target Species of Antibody: Human

Restrictions: For Research Use only

Handling

Format: Lyophilized

Reconstitution: Distilled water

Concentration: Lot specific

Buffer: Lyophilized from PBS

Storage: 4 °C, -20 °C

Storage Comment: Long term: -20°C, the use of 50% glycerol is recommended if storing aliquots in -20°C for long term use (up to 1 year)

Short term (less than 1 week): 4°C. Avoid freeze-thaw cycles.

Images

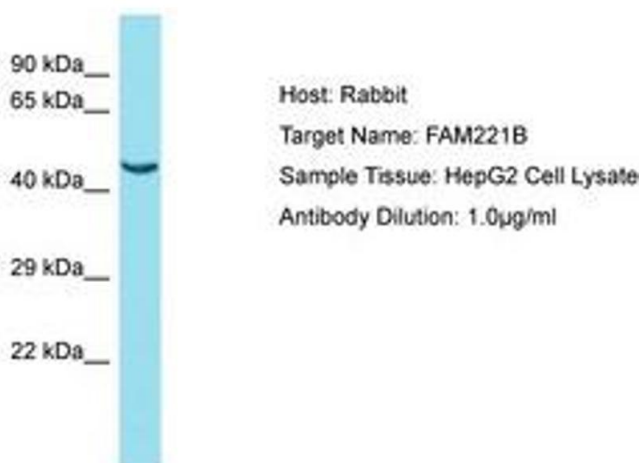


Image 1.