



[Go to Product page](#)

Datasheet for ABIN6750814
anti-C10ORF120 antibody (AA 223-272)

1 Image

Overview

Quantity:	100 µL
Target:	C10ORF120
Binding Specificity:	AA 223-272
Reactivity:	Human
Host:	Rabbit
Clonality:	Polyclonal
Conjugate:	This C10ORF120 antibody is un-conjugated
Application:	Western Blotting (WB)

Product Details

Immunogen:	Synthetic peptide located between aa223-272 of human C10orf120 (Q5SQS8, NP_001010912). Percent identity by BLAST analysis: Human (100%). Type of Immunogen: Synthetic peptide
Specificity:	Human C10orf120
Purification:	Immunoaffinity purified

Target Details

Target:	C10ORF120
Alternative Name:	C10orf120 (C10ORF120 Products)
Background:	Name/Gene ID: C10orf120

Target Details

Synonyms: C10orf120, BA318C4.1

Gene ID: 399814

NCBI Accession: [NP_001010912](#)

UniProt: [Q5SQS8](#)

Application Details

Application Notes: Optimal working dilution should be determined by the investigator.

Comment: Target Species of Antibody: Human

Restrictions: For Research Use only

Handling

Format: Lyophilized

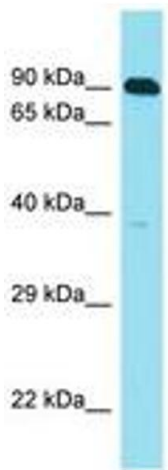
Reconstitution: Distilled water

Concentration: Lot specific

Buffer: Lyophilized from PBS

Storage: 4 °C, -20 °C

Storage Comment: Long term: -20°C, the use of 50% glycerol is recommended if storing aliquots in -20°C for long term use (up to 1 year)
Short term (less than 1 week): 4°C. Avoid freeze-thaw cycles.



Host: Rabbit
Target Name: C10orf120
Sample Tissue: HepG2 Cell Lysate
Antibody Dilution: 1.0µg/ml

Image 1.