



[Go to Product page](#)

Datasheet for ABIN6750817  
**anti-ZNF506 antibody (AA 322-371)**

1 Image

Overview

Quantity:	100 µL
Target:	ZNF506
Binding Specificity:	AA 322-371
Reactivity:	Human
Host:	Rabbit
Clonality:	Polyclonal
Conjugate:	This ZNF506 antibody is un-conjugated
Application:	Western Blotting (WB)

Product Details

Immunogen:	Synthetic peptide located between aa322-371 of human ZNF506 (Q5JVG8-2, NP_001138876). Percent identity by BLAST analysis: Human (100%).  Type of Immunogen: Synthetic peptide
Specificity:	Human ZNF506
Purification:	Immunoaffinity purified

Target Details

Target:	ZNF506
Alternative Name:	ZNF506 ( <a href="#">ZNF506 Products</a> )
Background:	Name/Gene ID: ZNF506

## Target Details

---

Synonyms: ZNF506, Zinc finger protein 506

Gene ID: 440515

NCBI Accession: [NP\\_001138876](#)

UniProt: [Q5JVG8](#)

## Application Details

---

Application Notes: Optimal working dilution should be determined by the investigator.

Comment: Target Species of Antibody: Human

Restrictions: For Research Use only

## Handling

---

Format: Lyophilized

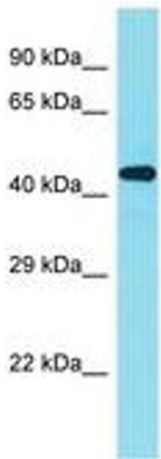
Reconstitution: Distilled water

Concentration: Lot specific

Buffer: Lyophilized from PBS

Storage: 4 °C, -20 °C

Storage Comment: Long term: -20°C, the use of 50% glycerol is recommended if storing aliquots in -20°C for long term use (up to 1 year)  
Short term (less than 1 week): 4°C. Avoid freeze-thaw cycles.



Host: Rabbit  
Target Name: ZNF506  
Sample Tissue: Fetal Kidney Lysate  
Antibody Dilution: 1.0µg/ml

Image 1.