



Datasheet for ABIN6750818
anti-ZYG11A antibody (AA 500-549)



[Go to Product page](#)

1 Image

Overview

| | |
|----------------------|---------------------------------------|
| Quantity: | 100 µL |
| Target: | ZYG11A |
| Binding Specificity: | AA 500-549 |
| Reactivity: | Human |
| Host: | Rabbit |
| Clonality: | Polyclonal |
| Conjugate: | This ZYG11A antibody is un-conjugated |
| Application: | Western Blotting (WB) |

Product Details

| | |
|---------------|--|
| Immunogen: | Synthetic peptide located between aa500-549 of human ZYG11A (Q6WRX3, NP_001004339). Percent identity by BLAST analysis: Human (100%). Type of Immunogen: Synthetic peptide |
| Specificity: | Human ZYG11A |
| Purification: | Immunoaffinity purified |

Target Details

| | |
|-------------------|--|
| Target: | ZYG11A |
| Alternative Name: | ZYG11A (ZYG11A Products) |
| Background: | Name/Gene ID: ZYG11A |

Target Details

Synonyms: ZYG11A, Protein zyg-11 homolog A, ZYG11, Zyg-11 homolog A (C. elegans)

Gene ID: 440590

NCBI Accession: [NP_001004339](#)

UniProt: [Q6WRX3](#)

Application Details

Application Notes: Optimal working dilution should be determined by the investigator.

Comment: Target Species of Antibody: Human

Restrictions: For Research Use only

Handling

Format: Lyophilized

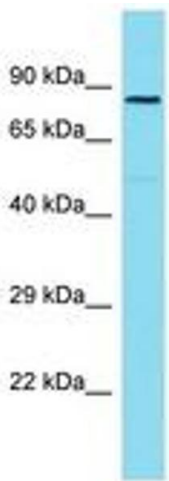
Reconstitution: Distilled water

Concentration: Lot specific

Buffer: Lyophilized from PBS

Storage: 4 °C, -20 °C

Storage Comment: Long term: -20°C, the use of 50% glycerol is recommended if storing aliquots in -20°C for long term use (up to 1 year)
Short term (less than 1 week): 4°C. Avoid freeze-thaw cycles.



Host: Rabbit
Target Name: ZYG11A
Sample Tissue: HeLa Cell Lysate
Antibody Dilution: 1.0µg/ml

Image 1.