

Datasheet for ABIN6750823
anti-CENPBD1 antibody (AA 55-104)



[Go to Product page](#)

1 Image

Overview

Quantity:	100 µL
Target:	CENPBD1
Binding Specificity:	AA 55-104
Reactivity:	Human
Host:	Rabbit
Clonality:	Polyclonal
Conjugate:	This CENPBD1 antibody is un-conjugated
Application:	Western Blotting (WB)

Product Details

Immunogen:	Synthetic peptide located between aa55-104 of human CENPBD1 (B2RD01, NP_659476). Type of Immunogen: Synthetic peptide
Specificity:	Human CENPBD1
Purification:	Immunoaffinity purified

Target Details

Target:	CENPBD1
Alternative Name:	CENPBD1 (CENPBD1 Products)
Background:	Name/Gene ID: CENPBD1

Target Details

Synonyms: CENPBD1

Gene ID: 92806

NCBI Accession: [NP_659476](#)

UniProt: [B2RD01](#)

Application Details

Application Notes: Optimal working dilution should be determined by the investigator.

Comment: Target Species of Antibody: Human

Restrictions: For Research Use only

Handling

Format: Lyophilized

Reconstitution: Distilled water

Concentration: Lot specific

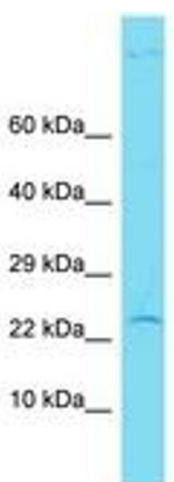
Buffer: Lyophilized from PBS

Storage: 4 °C, -20 °C

Storage Comment: Long term: -20°C, the use of 50% glycerol is recommended if storing aliquots in -20°C for long term use (up to 1 year)

Short term (less than 1 week): 4°C. Avoid freeze-thaw cycles.

Images



Host: Rabbit
Target Name: CENPBD1
Sample Tissue: Hela Cell Lysate
Antibody Dilution: 1.0µg/ml

Image 1.