



[Go to Product page](#)

Datasheet for ABIN6750826
anti-CLEC18C antibody (AA 303-352)

1 Image

Overview

Quantity:	100 µL
Target:	CLEC18C
Binding Specificity:	AA 303-352
Reactivity:	Human
Host:	Rabbit
Clonality:	Polyclonal
Conjugate:	This CLEC18C antibody is un-conjugated
Application:	Western Blotting (WB)

Product Details

Immunogen:	Synthetic peptide located between aa303-352 of human CLEC18B (Q8NCF0, NP_001011880). Percent identity by BLAST analysis: Human (100%). Type of Immunogen: Synthetic peptide
Specificity:	Human CLEC18B
Purification:	Immunoaffinity purified

Target Details

Target:	CLEC18C
Alternative Name:	CLEC18C (CLEC18C Products)
Background:	Name/Gene ID: CLEC18C

Target Details

Synonyms: CLEC18C, MRCL3, MRLP3, Mannose receptor-like 3, MRCL

Gene ID: 283971

NCBI Accession: [NP_001011880](#)

UniProt: [Q8NCF0](#)

Application Details

Application Notes: Optimal working dilution should be determined by the investigator.

Comment: Target Species of Antibody: Human

Restrictions: For Research Use only

Handling

Format: Lyophilized

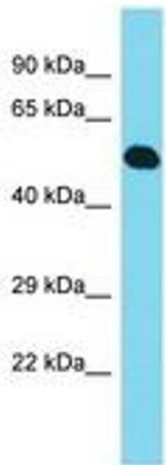
Reconstitution: Distilled water

Concentration: Lot specific

Buffer: Lyophilized from PBS

Storage: 4 °C, -20 °C

Storage Comment: Long term: -20°C, the use of 50% glycerol is recommended if storing aliquots in -20°C for long term use (up to 1 year)
Short term (less than 1 week): 4°C. Avoid freeze-thaw cycles.



Host: Rabbit
Target Name: CLEC18B
Sample Tissue: Fetal Heart Lysate
Antibody Dilution: 1.0µg/ml

Image 1.