



[Go to Product page](#)

Datasheet for ABIN6750827  
**anti-Clarin 3 antibody (AA 151-200)**

1 Image

### Overview

Quantity:	100 µL
Target:	Clarin 3 (CLRN3)
Binding Specificity:	AA 151-200
Reactivity:	Human
Host:	Rabbit
Clonality:	Polyclonal
Conjugate:	This Clarin 3 antibody is un-conjugated
Application:	Western Blotting (WB)

### Product Details

Immunogen:	Synthetic peptide located between aa151-200 of human CLRN3 (Q8NCR9, NP_689524). Percent identity by BLAST analysis: Human (100%).  Type of Immunogen: Synthetic peptide
Specificity:	Human CLRN3
Purification:	Immunoaffinity purified

### Target Details

Target:	Clarin 3 (CLRN3)
Alternative Name:	CLRN3 ( <a href="#">CLRN3 Products</a> )
Background:	Name/Gene ID: CLRN3

## Target Details

---

Synonyms: CLRN3, Clarin-3, USH3AL1, TMEM12, Transmembrane protein 12, Clarin 3

Gene ID: 119467

NCBI Accession: [NP\\_689524](#)

UniProt: [Q8NCR9](#)

## Application Details

---

Application Notes: Optimal working dilution should be determined by the investigator.

Comment: Target Species of Antibody: Human

Restrictions: For Research Use only

## Handling

---

Format: Lyophilized

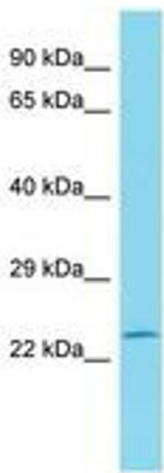
Reconstitution: Distilled water

Concentration: Lot specific

Buffer: Lyophilized from PBS

Storage: 4 °C, -20 °C

Storage Comment: Long term: -20°C, the use of 50% glycerol is recommended if storing aliquots in -20°C for long term use (up to 1 year)  
Short term (less than 1 week): 4°C. Avoid freeze-thaw cycles.



Host: Rabbit  
Target Name: CLRN3  
Sample Tissue: Jurkat Cell Lysate  
Antibody Dilution: 1.0µg/ml

Image 1.