



[Go to Product page](#)

Datasheet for ABIN6750828

anti-C2orf24 antibody (AA 91-140)

1 Image

Overview

Quantity:	100 µL
Target:	C2orf24
Binding Specificity:	AA 91-140
Reactivity:	Human, Mouse, Rat, Cow, Guinea Pig, Horse, Rabbit, Pig
Host:	Rabbit
Clonality:	Polyclonal
Conjugate:	This C2orf24 antibody is un-conjugated
Application:	Western Blotting (WB)

Product Details

Immunogen:	Synthetic peptide located between aa91-140 of human CNPPD1 (Q9BV87, NP_056495). Percent identity by BLAST analysis: Human, Chimpanzee, Mouse, Rat, Bovine, Rabbit, Horse, Pig, Guinea pig (100%). Type of Immunogen: Synthetic peptide
Specificity:	Human CNPPD1
Purification:	Immunoaffinity purified

Target Details

Target:	C2orf24
Alternative Name:	CNPPD1 (C2orf24 Products)

Target Details

Background:	Name/Gene ID: CNPPD1
	Synonyms: CNPPD1, CGI-57, Protein CNPPD1, C2orf24
Gene ID:	27013
NCBI Accession:	NP_056495
UniProt:	Q9BV87

Application Details

Application Notes:	Optimal working dilution should be determined by the investigator.
Comment:	Target Species of Antibody: Human
Restrictions:	For Research Use only

Handling

Format:	Lyophilized
Reconstitution:	Distilled water
Concentration:	Lot specific
Buffer:	Lyophilized from PBS
Storage:	4 °C,-20 °C
Storage Comment:	Long term: -20°C, the use of 50% glycerol is recommended if storing aliquots in -20°C for long term use (up to 1 year) Short term (less than 1 week): 4°C. Avoid freeze-thaw cycles.

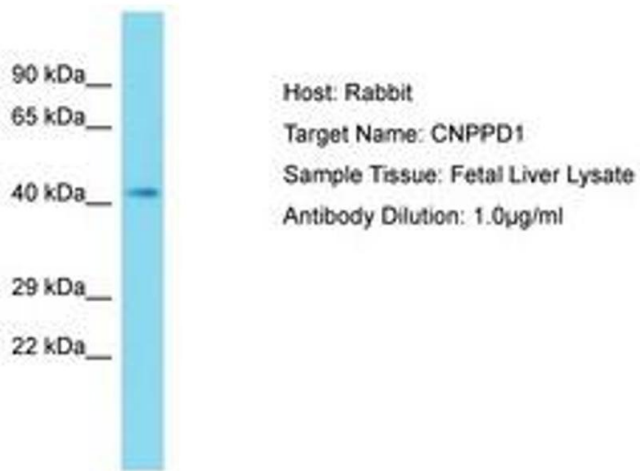


Image 1.