



[Go to Product page](#)

Datasheet for ABIN675099

anti-TIE1 antibody (AA 851-1000)

1 Image

Overview

Quantity:	100 µL
Target:	TIE1
Binding Specificity:	AA 851-1000
Reactivity:	Human, Rat
Host:	Rabbit
Clonality:	Polyclonal
Conjugate:	This TIE1 antibody is un-conjugated
Application:	Western Blotting (WB), ELISA, Immunohistochemistry (Paraffin-embedded Sections) (IHC (p)), Immunohistochemistry (Frozen Sections) (IHC (fro)), Immunofluorescence (Cultured Cells) (IF (cc)), Immunofluorescence (Paraffin-embedded Sections) (IF (p))

Product Details

Immunogen:	KLH conjugated synthetic peptide derived from human Tie1
Isotype:	IgG
Cross-Reactivity:	Human, Rat
Predicted Reactivity:	Mouse
Purification:	Purified by Protein A.

Target Details

Target:	TIE1
---------	------

Target Details

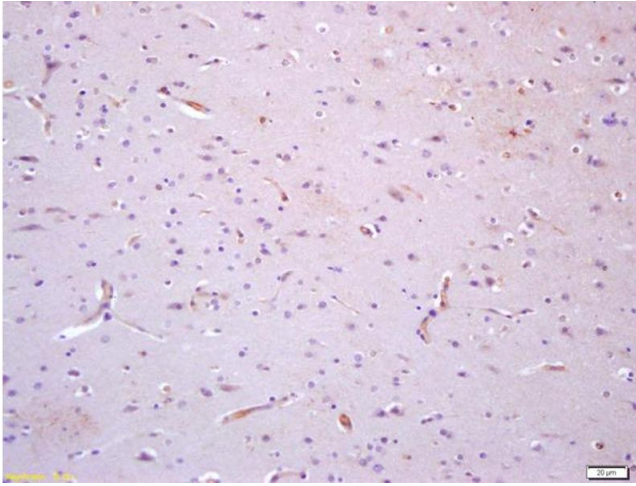
Alternative Name:	TIE1 (TIE1 Products)
Background:	Synonyms: TIE, JTK14, Tyrosine-protein kinase receptor Tie-1, TIE1 Background: Transmembrane tyrosine-protein kinase that may modulate TEK/TIE2 activity and contribute to the regulation of angiogenesis.
Gene ID:	7075
UniProt:	P35590
Pathways:	RTK Signaling

Application Details

Application Notes:	WB 1:300-5000 ELISA 1:500-1000 IHC-P 1:200-400 IHC-F 1:100-500 IF(IHC-P) 1:50-200 IF(IHC-F) 1:50-200 IF(ICC) 1:50-200
Restrictions:	For Research Use only

Handling

Format:	Liquid
Concentration:	1 µg/µL
Buffer:	0.01M TBS(pH 7.4) with 1 % BSA, 0.02 % Proclin300 and 50 % Glycerol.
Preservative:	ProClin
Precaution of Use:	This product contains ProClin: a POISONOUS AND HAZARDOUS SUBSTANCE, which should be handled by trained staff only.
Storage:	4 °C,-20 °C
Storage Comment:	Shipped at 4°C. Store at -20°C for one year. Avoid repeated freeze/thaw cycles.
Expiry Date:	12 months



Immunohistochemistry

Image 1. Formalin-fixed and paraffin embedded human brain with labeled Anti-TIE1 Polyclonal Antibody, Unconjugated (ABIN675099) at 1:200, followed by conjugation to the secondary antibody and DAB staining